



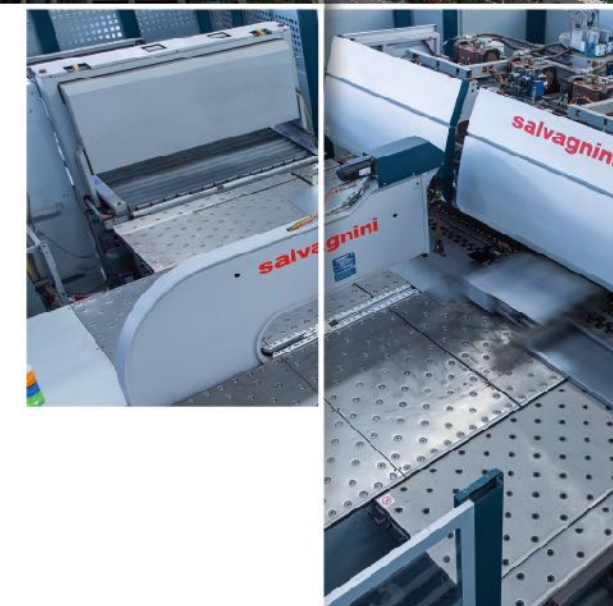
# Tenau

TENAU ELEVATOR



# TENAU

# ELEVATOR



**TENAU ELEVATOR (CHINA) CO., LTD.**

North of Lianyi Road, Nanxun Economic Development Zone,  
Zhejiang Province  
Tel: +86-572-3765590  
E-mail: [Export@tenau.com.cn](mailto:Export@tenau.com.cn)  
[Http://www.tenau.net](http://www.tenau.net)  
P.C.: 313009

# Contents

Brief	01- 02	Villa cabin decoration	55- 56
Tenau intelligentized factory with internationally advanced manufacturing standard	03- 04	Villa decoration	57- 58
Certificates and Engineering Cases	05- 10	Function Table	59- 60
Passenger Elevator With Machine Room	11	Construction Parameter Villa Elevator	61- 62
Passenger Elevator Machine Roomless	12	Freight Elevator	63
Cabin Decoration(Passenger Elevator)	13- 30	Car elevator	64
Panoramic Elevator	31	Decoration Of Freight elevator & Car elevator	65- 66
Panoramic Elevator 180° half-round observation	32	Function Table	67- 68
Panoramic Elevator 270° three-side observation	33	Freight Elevator Construction Parameter	69
Panoramic Elevator 360° 3D full-view observation	34	Machine Roomless Freight Elevator Construction Parameter	70
Hospital Elevator	35- 36	Car Elevator Construction Parameter	71
Cabin operation Panel	37- 40	Escalator Summary	72
Optional decoration	41- 44	Moving Walk Summary	73
Function Table	45- 46	Heavy Duty Type Escalator	74
Machine Room Passenger Elevator Construction Parameter	47- 48	Escalator Safety Device	75
Machine Roomless Passenger Elevator Construction Parameter	49	Moving Walk Safety Device	76
Hospital Elevator Construction Parameter	50	Standard & Optional Function	77- 78
Machine Room Panoramic Elevator Construction Parameter	51	30° Escalator Construction Parameter	79
Machine Roomless Panoramic Elevator Construction Parameter	52	35° Escalator Construction Parameter	80
Spacious Space Taste Leisurely Life	53	12° Moving walk Construction Parameter	81
Green And Noiseless Design Gives You Healthy Life	54	0° Moving walk Construction Parameter	82



# Brief

TENAU ELEVATOR (CHINA) Co., Ltd., located in Huzhou City, Zhejiang Province, is a wholly-owned investment company by SUZHOU DIAO Elevator Co., Ltd. in 2012, which is specially aimed at the overseas market. TENAU is close to Shanghai, only one hour away by car.

During the initial set-up stage, TENAU has already had professional elevator and escalator production lines, fully automatic panel production equipment - salvagnini, and employed more than 300 people.

In 2016, DIAO Group Ltd consolidated these two factories - DIAO and TENAU, which then have become two production bases, sharing the production platform. DIAO manufactures all the escalators and passenger elevators, and TENAU is responsible for manufacturing all the cargo elevators and home lift.

Brand DIAO has stayed in business for 16 years and accumulated rich experience in production, technology and product development. On this basis, TENAU can better serve overseas customers, at the same time, we can provide multiple languages service, including Russian, Spanish, English and Arabic.

TENAU has obtained energy efficiency certification of TUV for MR and MRL, besides this, our company has also obtained CE certification for MR, MRL of Passenger, ESCALATOR and MOVING WALK.

TENAU owns independent R&D team, which successfully developed and operated the 13m/s elevator on the testing tower with the height of 168 meters.



- 168-meter test tower
- 13 m / s ultra-high speed with independent R & D technology
- High-end intelligent elevator
- Industry 4.0 production system
- Export more than 70 countries in worldwide



# Tenau Modern Intelligentized Factory With Internationally Advanced Manufacturing Standard

The Tenau (China) industry 4.0 production system, which was guided, planned and constructed by the German Tenau elevator group, creates new opportunities for establishment of modern intelligentized factory. Several top automatic production equipment, combined with big data and Internet of Things, can realize intelligent processing, intelligent production, intelligent detection and intelligent monitoring of industry procedures.

## Fully-automatic panel production line-Salvagnini

World top automatic equipment, automatic set-up of processing thickness without the necessity to adjust time and MAC2.0 adaptive technique to guarantee quality.

## SMT paster assembly line

SMT paster assembly line which is second to none in the industry can realize production of outer casing, interface board, power panel and communication panel with international standard.

## Industrial robot

Realize mechanical way of working, adapt to extreme environment and realize multiple tasks, like carrying, welding, and loading and unloading.





# Certificate and Engineering Projects

## Certificates



TUV-CERTIFICATE-ESCALATOR



TUV-CERTIFICATE-MOVING WALK

EN 115-1:2008+A1:2010



CERTIFICATE OF ENERGY EFFICIENCY



CERTIFICATE OF ENERGY EFFICIENCY



TUV-CERTIFICATE-MACHINE ROOM-PASSENGER ELEVATOR



TUV-CERTIFICATE-MACHINE ROOM-PASSENGER ELEVATOR

European Directive 2014/33/EU  
Harmonized Standards EN81-20:2014, EN81-50:2014

## Asia



ICON SIAM Shopping Mall, Bangkok, Thailand



TERMINAL 21 Shopping Mall, Pattaya, Thailand



Hotel Yasmin Karawaci, Indonesia



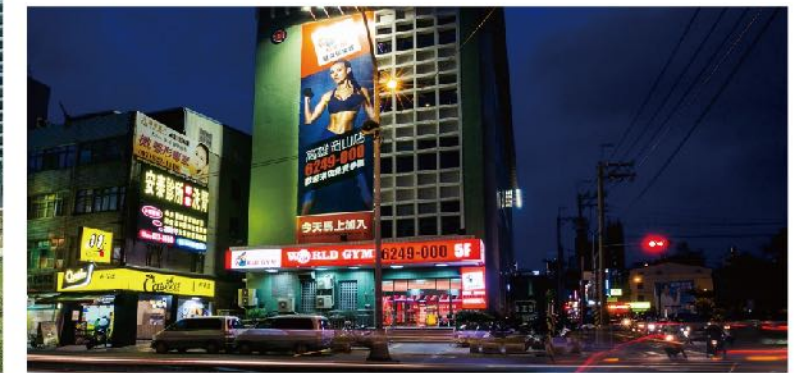
Subway project, Seoul, South Korea



Grand Kamala Lagoon, Jakarta, Indonesia



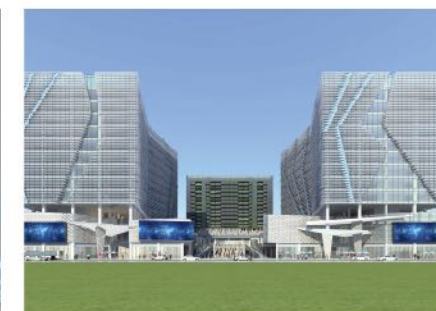
Porto de Melaka, Malacca, Malaysia



Gangshan Shopping Mall, Kaohsiung, Taiwan



Fengshan Shopping Mall, Kaohsiung, Taiwan



International Plaza, Phnom Penh, Cambodia



Zhiron Garden, Sihanoukville, Cambodia



# Certificate and Engineering Projects

## Latin America



UNITEC, Queretaro, Mexico



TOLUCA, Queretaro, Mexico



Colombia



Parque de Ocio, Bogota, Colombia



Colombia



Colombia



BPS, Montevideo, Uruguay



URQUIZA, Montevideo, Uruguay

## Russian speaking countries



Best Center, St Petersburg, Russia



Moscow Shopping Mall



Moscow Shopping Mall



Hotel, Novosibirsk, Russia



Khabarovsk Airport



Shopping Mall, Novosibirsk, Russia



Pala Group, Tbilisi, Georgia



Administration Building, Vladivostok, Russia



# Certificate and Engineering Projects

## The Middle East



Laleh Building, Mashhad, Iran



ARG Shopping Mall, Mashhad, Iran



Aftab Shopping Mall, Mashhad, Iran

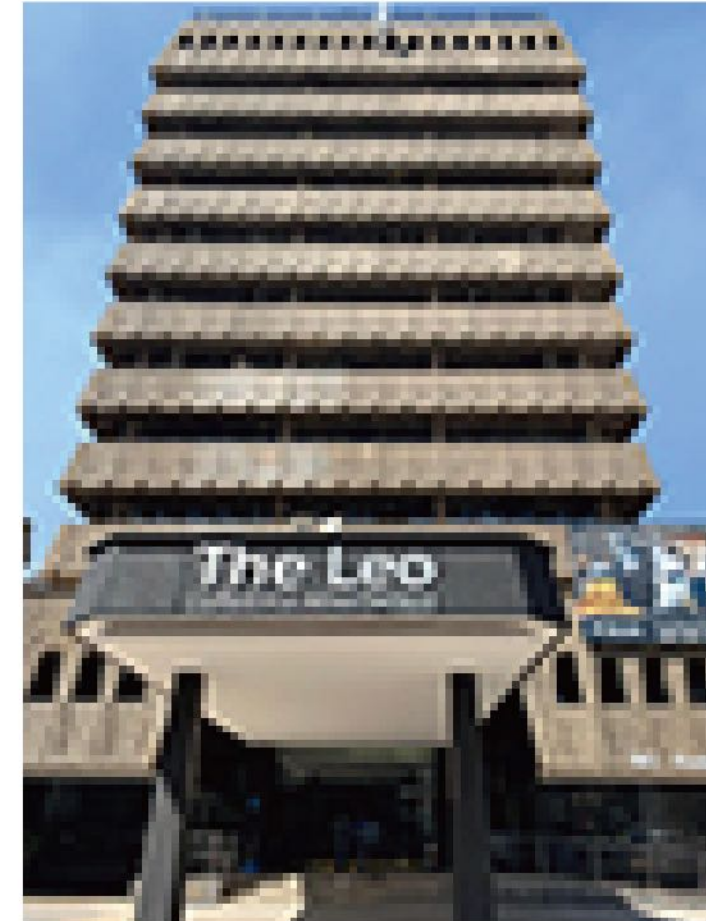


Sand Rose, Dubai



Bonyad Project, Mashhad, Iran

## Africa



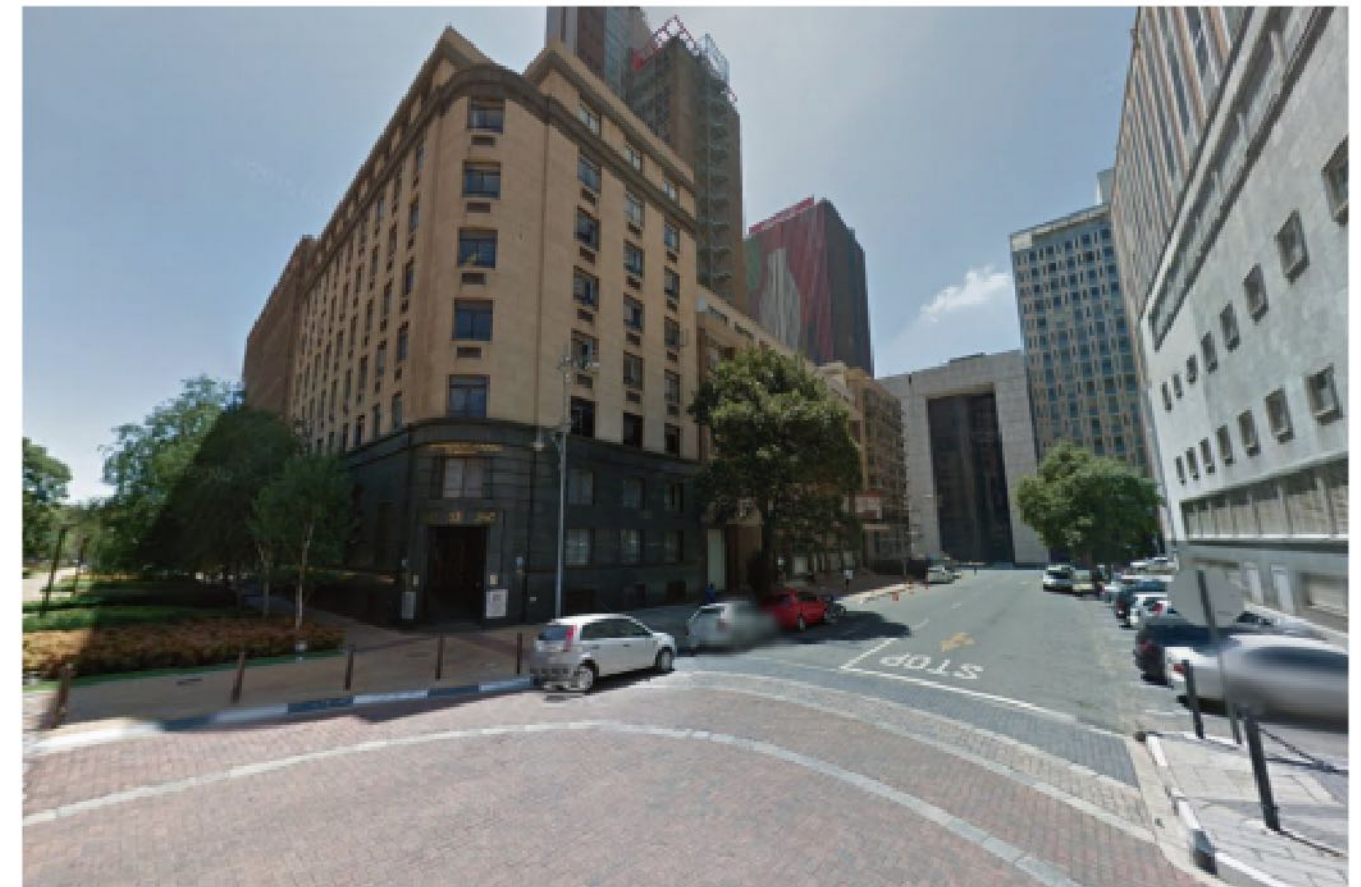
The Leo lifestyle apartments, South Africa



Palm Spring Resort, Liberia



Molecular Lab Building, Banjul, Gambia



58 Main St, Johannesburg, Gauteng



# Passenger Elevator With Machine Room

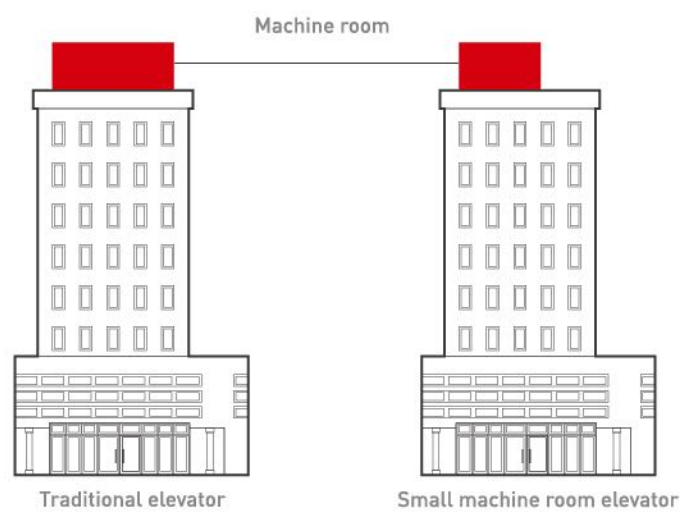
Saving room volume

50%

## Space efficiency

The machine room of the elevator only need 50% space of the traditional machine room. Therefore, it provides more possibilities for construction design.

Tenau passenger elevators with small machine room have improved its performance by reducing area of their machine rooms. With advantages in saving floor areas and construction costs, the elevators are applicable to office buildings, hotels and supermarkets.

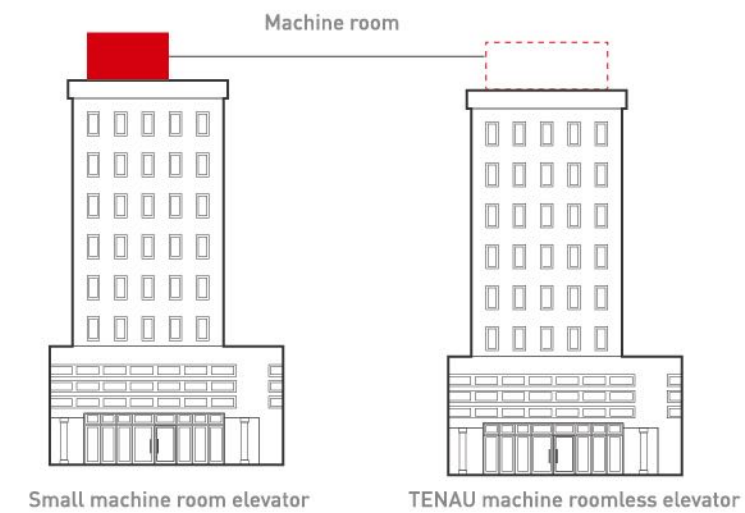


# Passenger Elevator Machine Roomless

Tenau machine roomless passenger elevators eliminate influence of the machine room on construction from the structural aspect, providing more possibilities for construction space arrangement or construction design. Such elevators are applicable to hotels, business buildings high-rises and other buildings with higher requirements for construction.

## Free up the space

The control cabinet and traction machine are installed in inner part of the hoist way, freeing up the original space spared for the machine room. Compared with traditional design, the new mode could save more than 10% of the floor area.





## Spacious Space Taste Leisurely Life

**Open space for your luxury villa  
To highlight your identity, even the lift car  
of elevator is no exception.**

With compact design adopted for Tenau villa elevator, it saves the using area of well by 15%-20% and could provide larger size of lift car in the same well. The maximum net height of lift car can reach 2200mm (roof height: 3m), which can bring you open space experience and make you go in and out more easily.

It can save the using area of well at least by 15%

15%

The roof height can reach 3m

3M



## Green and Noiseless Design Gives You Healthy Life

Equivalent to that released by a big tree with the height of 5m

5M

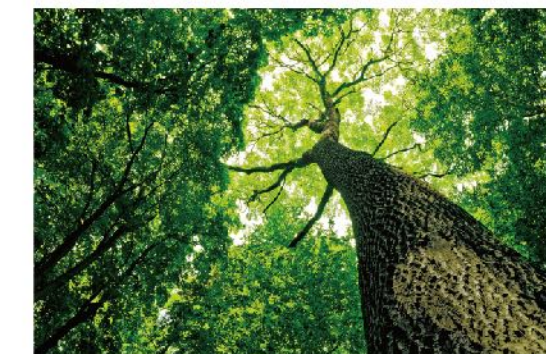
Filters PM2.5 to make lift car filled with exceptional fresh air

PM2.5

### 8 million- negative oxygen ion fan (optional)

The anion it releases is equivalent to that released by a big tree with the height of 5m. In the meantime, it can sterilize, absorb methanol, remove peculiar smell & second-hand smoke and filter PM2.5 to make lift car filled with exceptional fresh air.

### 8 million negative oxygen ion fan



The application of a series of intelligent technologies to Tenau villa not only brings you comfort but also health.



# Villa Cabin Decoration

## Warm and Elegant



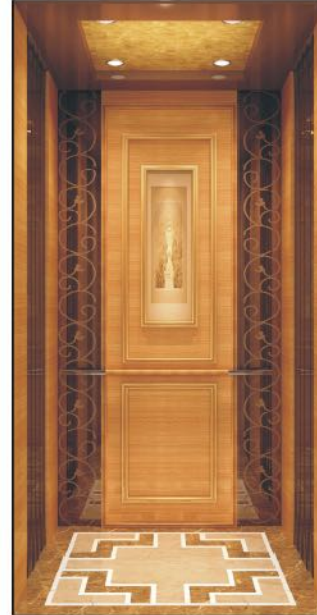
### TO-V001

Optional

Ceiling: wooden modelling, gold foil, lamp belt and LED tube lamp  
 Side wall: craft wooden facing, wallpaper and craft glass  
 Rear wall: craft wooden facing, car edge mirror and wallpaper  
 Handrail: craft handrail  
 Floor: marble pattern



## Warm and Elegant



### TO-V002

Optional

Ceiling: rose gold mirror stainless steel, gold foil and LED tube lamp  
 Side wall: craft wooden facing and rose gold mirror stainless steel etching  
 Rear wall: craft wooden facing and rose gold mirror stainless steel etching  
 Handrail: craft handrail  
 Floor: marble pattern



## Minimalist Style



### TO-V043

Optional

Ceiling: hairline stainless steel, acrylic light decoration, down light  
 Car wall: hairline stainless steel, mirror stainless steel  
 Handrail: stainless steel tube  
 Floor: PVC pattern



## Modern Style



### TO-V010

Optional

Ceiling: mirror stainless steel, LED downlight  
 Car wall: wood veneer, mirror stainless steel  
 Floor: PVC



## Simple



### TO-V003

Optional

Ceiling: metal stoving varnish modeling, LED tube lamp  
 Side wall: color grain steel plate, white stoving varnish steel plate and brushed stainless steel trim strip  
 Rear wall: color grain steel plate, white stoving varnish steel plate  
 Floor: PVC pattern



## Enjoyable



### TO-V040

Optional

Ceiling: painted steel frame, middle mirror stainless steel, surrounded by downlight lighting  
 Side wall: rosewood veneer  
 Rear wall: both sides of the rosewood, the middle mirror titanium etching stainless steel  
 Floor: marble pattern



## Golden Age



### TO-V019

Optional

Ceiling: titanium mirror, cross-flow fan, LED floodlight  
 Side wall: titanium mirror etching, marble  
 Rear wall: titanium mirror, marble  
 Floor: marble pattern



## Simple



### TO-V004

Optional

Ceiling: metal stoving varnish modeling, mirror stainless steel and LED tube lamp  
 Side wall: color grain steel plate  
 Rear wall: marble pad pasting, black titanium mirror stainless steel  
 Floor: PVC pattern





# Villa Decoration

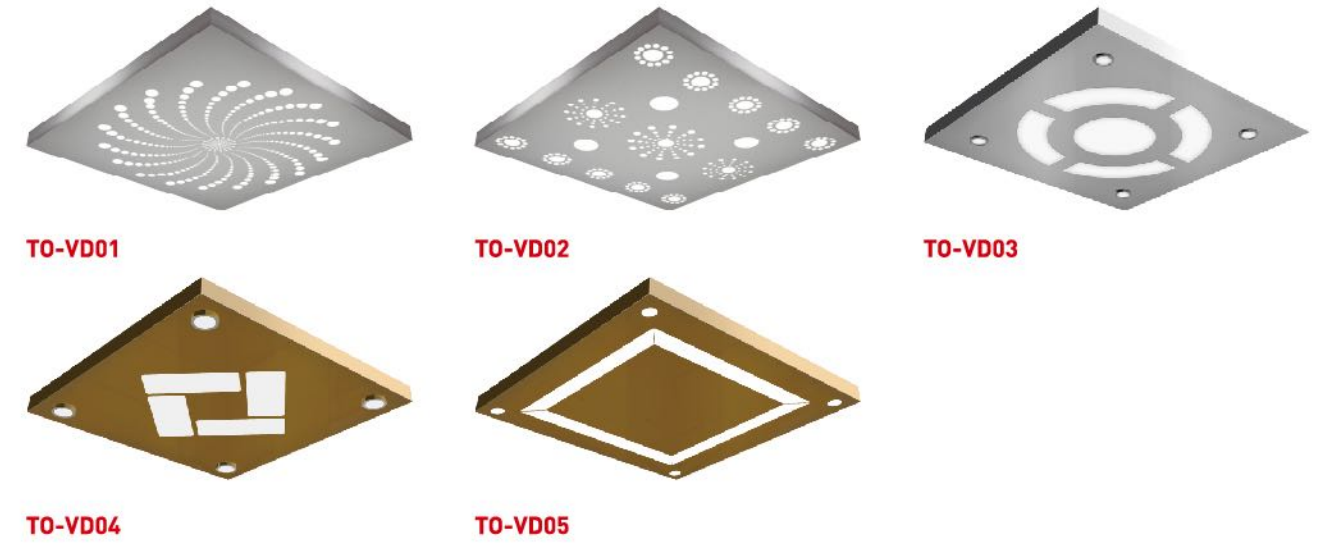
## Car operation panel



## Handrail



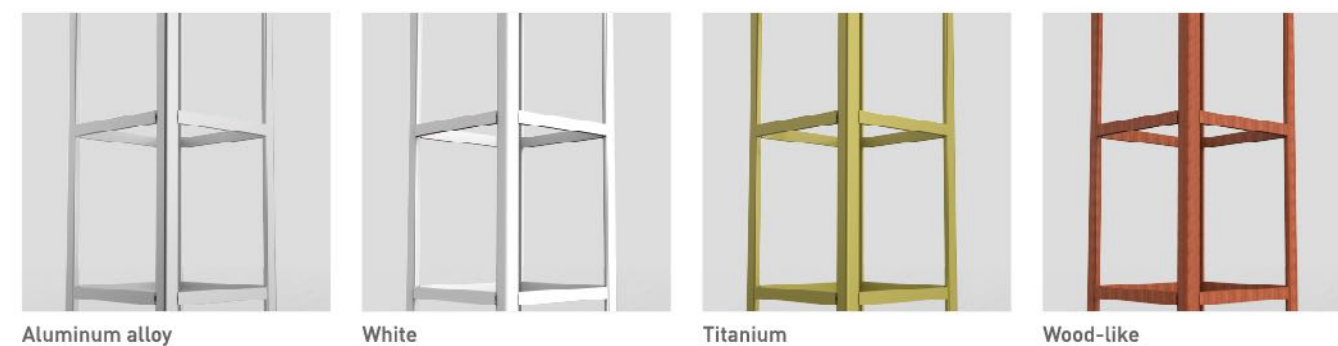
## Ceiling



## Landing door series



## Hoistway frame



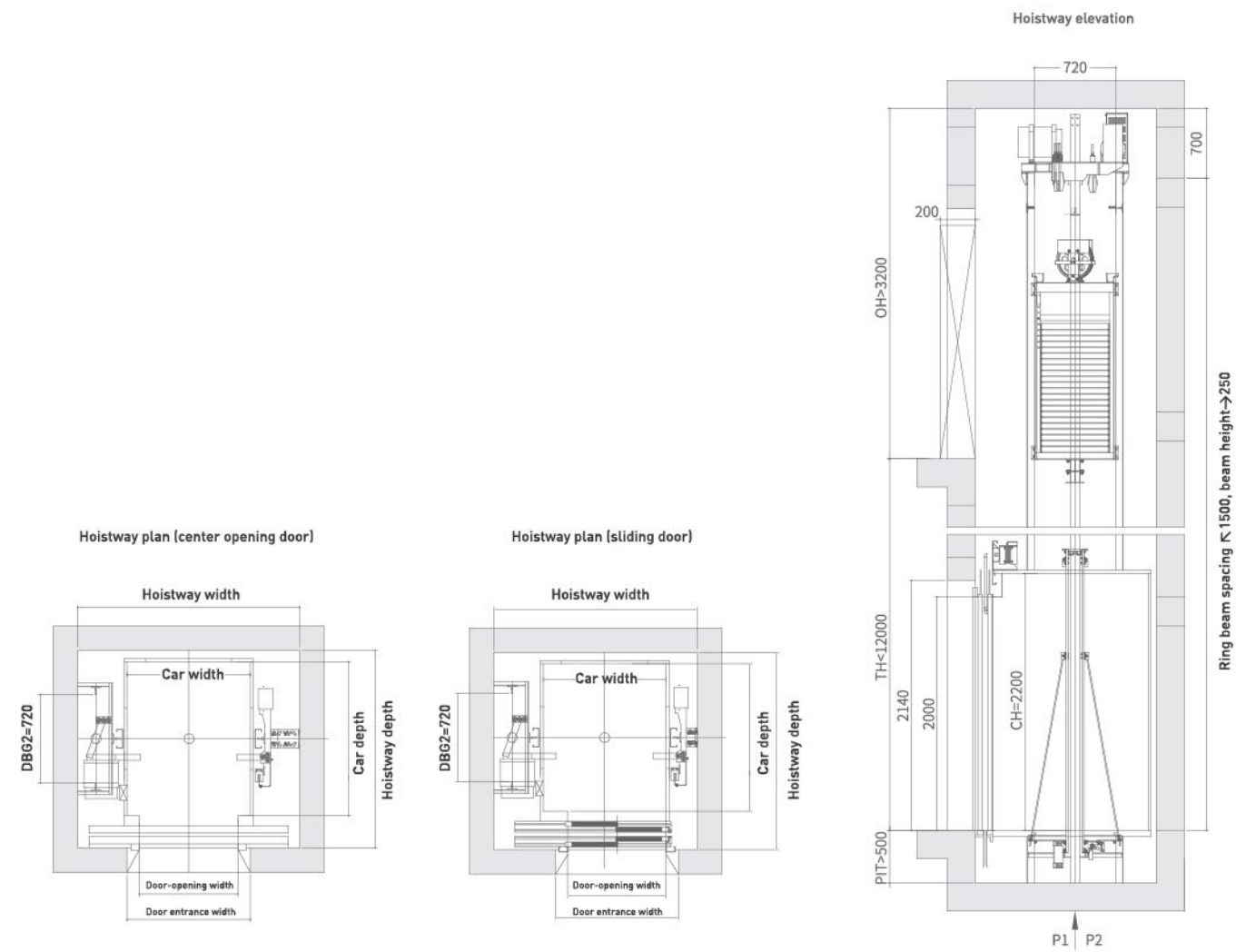
## Floor





# Construction Parameter Villa Elevator

## Gantry type villa elevator



### Gantry type (center opening door)

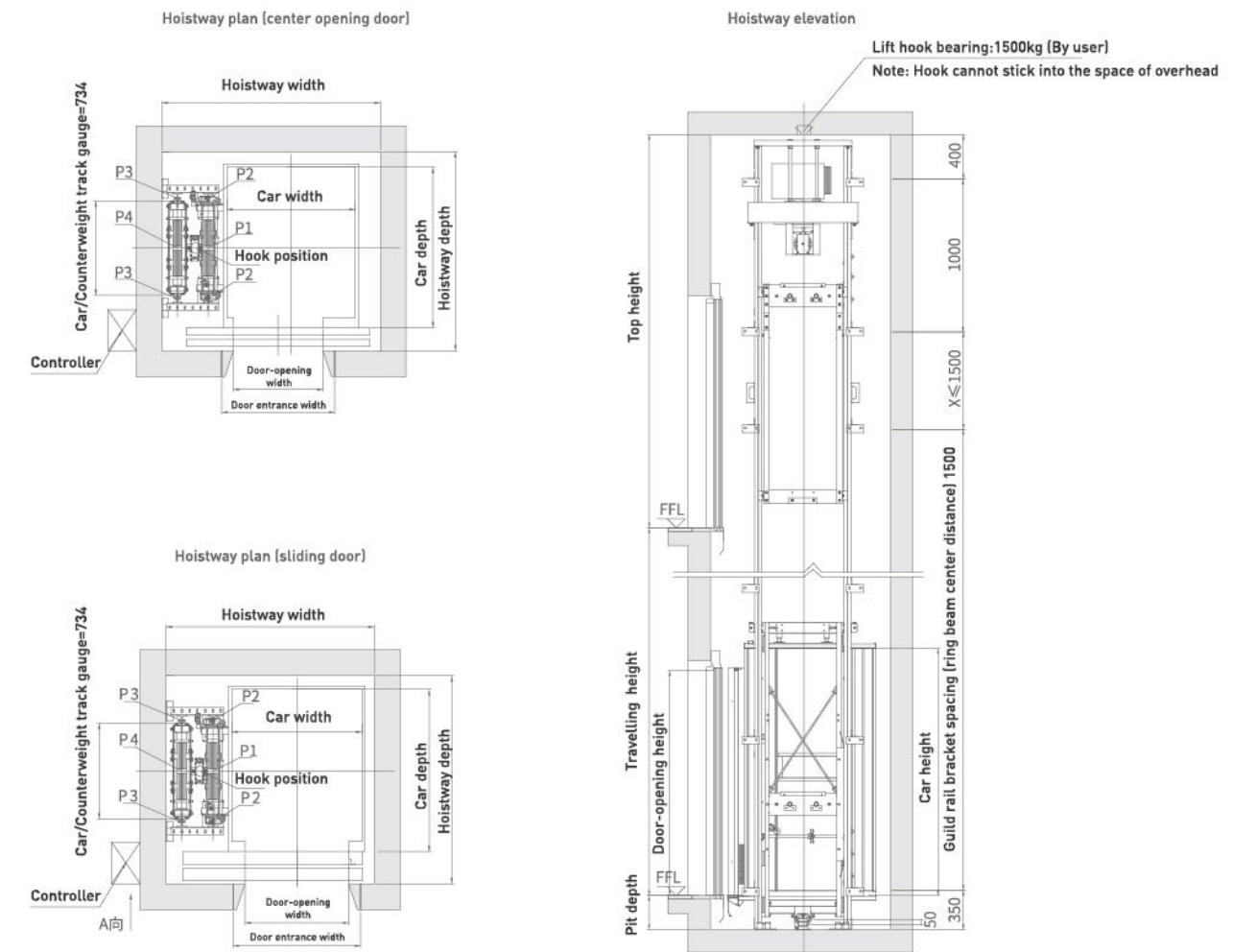
Load	Speed	Car net size	Door opening width	Door width	Hoistway net size	Top height	Pit depth
250	0.4	800x1250	700 Center opening	900	1600x1600	3200	500
320	0.4	900x1250	700 Center opening	900	1650x1600	3200	500
400	0.4	1000x1250	800 Center opening	1000	1800x1600	3200	500

### Gantry type (sliding door)

Load	Speed	Car net size	Door opening width	Door width	Hoistway net size	Top height	Pit depth
250	0.4	800x1200	700 Side opening	900	1450x1600	3200	500
320	0.4	900x1200	800 Side opening	1000	1550x1600	3200	500
400	0.4	1000x1200	800 Side opening	1000	1650x1600	3200	500

Note: The above civil construction parameter is for reference. Civil construction is subject to the formal civil construction diagrams.

## Rucksack type villa elevator



### Rucksack type (center opening door)

Load	Speed	Car net size	Door opening width	Door width	Hoistway net size	Top height	Pit depth
250	0.4	800x1250	700 Center opening	900	1600x1600	3200	350
320	0.4	900x1250	700 Center opening	900	1650x1600	3200	350
400	0.4	1000x1250	800 Center opening	1000	1800x1600	3200	350

### Rucksack type (sliding door)

Load	Speed	Car net size	Door opening width	Door width	Hoistway net size	Top height	Pit depth
250	0.4	800x1200	700 Side opening	900	1450x1600	3200	350
320	0.4	900x1200	800 Side opening	1000	1550x1600	3200	350
400	0.4	1000x1200	800 Side opening	1000	1650x1600	3200	350

Note: The above civil construction parameter is for reference. Civil construction is subject to the formal civil construction diagrams.