



**Tenau**  
TENAU ELEVATOR



**TENAU**  
ELEVATOR



**TENAU ELEVATOR (CHINA) CO., LTD.**

North of Lianyi Road, Nanxun Economic Development Zone,  
Zhejiang Province  
Tel: +86-572-3765590  
E-mail: [Export@tenau.com.cn](mailto:Export@tenau.com.cn)  
[Http://www.tenau.net](http://www.tenau.net)  
P.C.: 313009



# Brief

TENAU ELEVATOR (CHINA) Co., Ltd., located in Huzhou City, Zhejiang Province, is a wholly-owned investment company by SUZHOU DIAO Elevator Co., Ltd. in 2012, which is specially aimed at the overseas market. TENAU is close to Shanghai, only one hour away by car.

During the initial set-up stage, TENAU has already had professional elevator and escalator production lines, fully automatic panel production equipment - salvagnini, and employed more than 300 people.

In 2016, DIAO Group Ltd consolidated these two factories - DIAO and TENAU, which then have become two production bases, sharing the production platform. DIAO manufactures all the escalators and passenger elevators, and TENAU is responsible for manufacturing all the cargo elevators and home lift.

Brand DIAO has stayed in business for 16 years and accumulated rich experience in production, technology and product development. On this basis, TENAU can better serve overseas customers, at the same time, we can provide multiple languages service, including Russian, Spanish, English and Arabic.

TENAU has obtained energy efficiency certification of TUV for MR and MRL, besides this, our company has also obtained CE certification for MR, MRL of Passenger, ESCALATOR and MOVING WALK.

TENAU owns independent R&D team, which successfully developed and operated the 13m/s elevator on the testing tower with the height of 168 meters.



- 168-meter test tower
- 13 m / s ultra-high speed with independent R & D technology
- High-end intelligent elevator
- Industry 4.0 production system
- Export more than 70 countries in worldwide



# Tenau Modern Intelligentized Factory With Internationally Advanced Manufacturing Standard

The Tenau (China) industry 4.0 production system, which was guided, planned and constructed by the German Tenau elevator group, creates new opportunities for establishment of modern intelligentized factory. Several top automatic production equipment, combined with big data and Internet of Things, can realize intelligent processing, intelligent production, intelligent detection and intelligent monitoring of industry procedures.

## Fully-automatic panel production line-Salvagnini

World top automatic equipment, automatic set-up of processing thickness without the necessity to adjust time and MAC2.0 adaptive technique to guarantee quality.

## SMT paster assembly line

SMT paster assembly line which is second to none in the industry can realize production of outer casing, interface board, power panel and communication panel with international standard.

## Industrial robot

Realize mechanical way of working, adapt to extreme environment and realize multiple tasks, like carrying, welding, and loading and unloading.





# Certificate and Engineering Projects

## Certificates



TUV-CERTIFICATE-ESCALATOR



TUV-CERTIFICATE-MOVING WALK

EN 115-1:2008+A1:2010



CERTIFICATE OF ENERGY EFFICIENCY



CERTIFICATE OF ENERGY EFFICIENCY



TUV-CERTIFICATE-MACHINE ROOM-PASSENGER ELEVATOR



TUV-CERTIFICATE-MACHINE ROOM-PASSENGER ELEVATOR

European Directive 2014/33/EU  
Harmonized Standards EN81-20:2014, EN81-50:2014

## Asia



ICON SIAM Shopping Mall, Bangkok, Thailand



TERMINAL 21 Shopping Mall, Pattaya, Thailand



Hotel Yasmin Karawaci, Indonesia



Subway project, Seoul, South Korea



Grand Kamala Lagoon, Jakarta, Indonesia



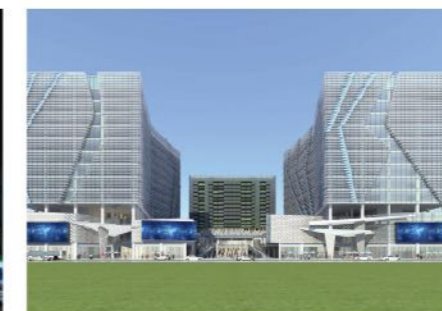
Porto de Melaka, Malacca, Malaysia



Gangshan Shopping Mall, Kaohsiung, Taiwan



Fengshan Shopping Mall, Kaohsiung, Taiwan



International Plaza, Phnom Penh, Cambodia



Zhiron Garden, Sihanoukville, Cambodia



# Certificate and Engineering Projects

## Latin America



UNITEC, Queretaro, Mexico



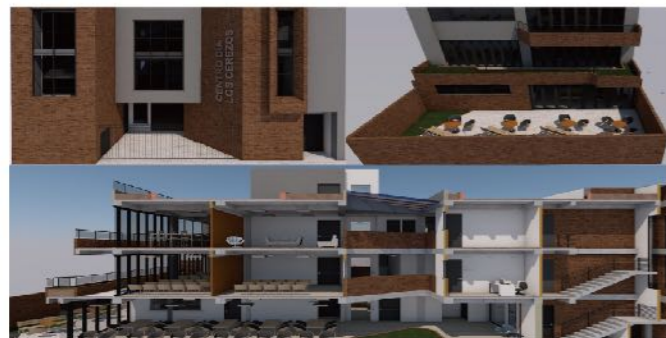
TOLUCA, Queretaro, Mexico



Colombia



Parque de Ocio, Bogota, Colombia



Colombia



Colombia



BPS, Montevideo, Uruguay



URQUIZA, Montevideo, Uruguay

## Russian speaking countries



Best Center, St Petersburg, Russia



Moscow Shopping Mall



Moscow Shopping Mall



Hotel, Novosibirsk, Russia



Khabarovsk Airport



Administration Building, Vladivostok, Russia



Shopping Mall, Novosibirsk, Russia



Pala Group, Tbilisi, Georgia



# Passenger Elevator With Machine Room

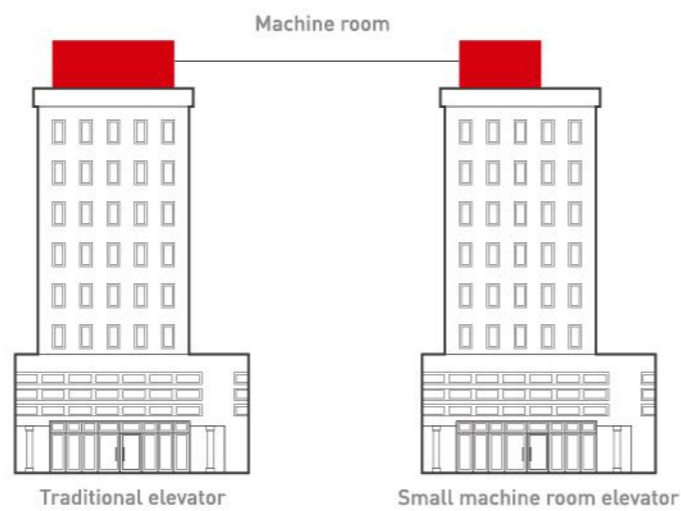
Saving room volume

50%

## Space efficiency

The machine room of the elevator only need 50% space of the traditional machine room. Therefore, it provides more possibilities for construction design.

Tenau passenger elevators with small machine room have improved its performance by reducing area of their machine rooms. With advantages in saving floor areas and construction costs, the elevators are applicable to office buildings, hotels and supermarkets.

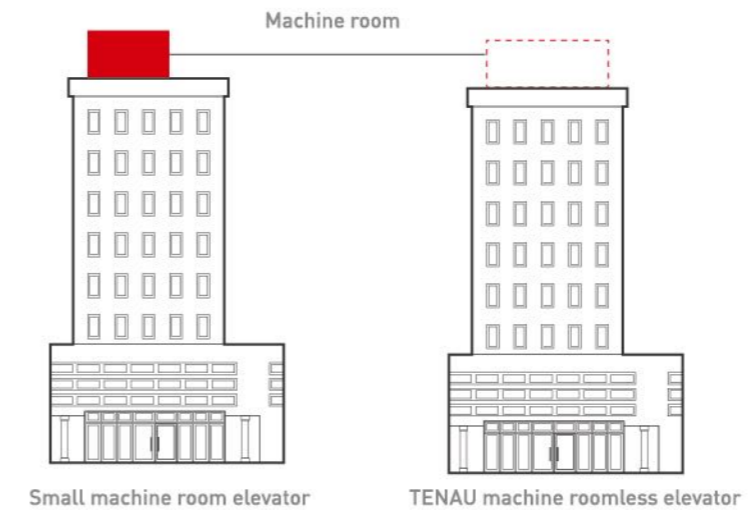


# Passenger Elevator Machine Roomless

Tenau machine roomless passenger elevators eliminate influence of the machine room on construction from the structural aspect, providing more possibilities for construction space arrangement or construction design. Such elevators are applicable to hotels, business buildings high-rises and other buildings with higher requirements for construction.

## Free up the space

The control cabinet and traction machine are installed in inner part of the hoist way, freeing up the original space spared for the machine room. Compared with traditional design, the new mode could save more than 10% of the floor area.





# Panoramic Elevator

Tenau observation elevator adheres to the design principle of innovativeness and fashion. To meet various demands of hotels and supermarkets, our company provides different elevator designs according to their building styles. Delicate style designs provide passengers with different scenic perspectives and broad scenic views.

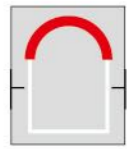


## Delicate lift car

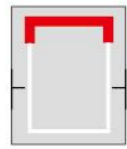
Tenau provides different decoration options for lift cars, so as to match up facades and interior decoration of various buildings.

## Rich structures

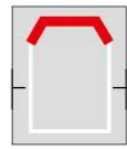
Square, circular and polygon reinforced glass structures offer different scenic perspectives and bring all views to eyes of passengers.



Semi-circular shaped panorama elevator



Square shaped panorama elevator



Cutting-angle-type panorama elevator

## Comfortable and stable operation

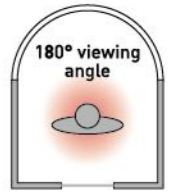
Our company aims to improve experience of passengers by applying several advanced technologies and creating dynamic and comfortable space. Passengers will feel pleasant and comfortable during stable operation of the elevator.

## Transparent structures for wide views

The elevator adopts safe laminated glass which could offer wide views by its transparent nature. Streamline design and wide views provide passengers with a broad and clear world they have never experienced.



# Panoramic Elevator 180° half-round observation



## TO-G001

Standard

- Canopy: Painted steel with decoration
- Observation wall: Three pieces of laminated glass
- Car Ceiling: Mirror stainless steel
- Car wall: Hairline stainless steel
- Handrail: Single tube with stainless steel
- Car floor: PVC floor



## TO-G002

Standard

- Car Cover: Paint steel, tube lamp, acrylic lamp
- Observation Wall: Laminated glass three pieces
- Decoration Roof: Acrylic roof lamp
- Car Wall: Hairline finished St/St
- Handrail:  $\phi$  38 Stainless steel tube
- Floor: PVC floor



## TO-G003

Standard

- Upper / lower hood: White acrylic
- Observation wall: Laminated glass (5+5 three pieces)
- Decoration ceiling: Steel plate plastic, tube lamp
- Car wall: Hairline stainless steel
- Handrail:  $\phi$ 38 stainless steel tube
- Floor: PVC



## TO-G004

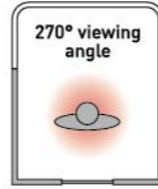
Standard

- Car Cover: Paint steel plate, decoration lamp
- Observation Wall: 3PCs of safety laminated glass
- Decoration Roof: Acrylic roof lamp
- Car Wall: Hairline plate, etched
- Handrail: Stainless steel tube
- Floor: PVC floor



# Panoramic Elevator

## 270° three-side observation



### TO -G005

Standard

Car Cover: Painted steel, Tube Lamp  
 Observation Wall: Laminated glass  
 Decoration Roof: Acrylic lighting cover  
 Car Wall: Hairline Finished St/St  
 Handrail:  $\phi$  25.4 Stainless steel double tube  
 Floor: PVC Floor



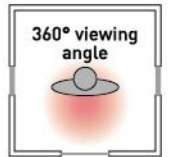
### TO -G006

Standard

Car cover: Baking enamel, lighting decoration  
 Observation wall: Laminated glass safety clamp  
 Decoration ceiling: Mirror finished st./st, acrylic  
 Car wall: Laminated glass  
 Handrail: Stainless steel tube  
 Floor: PVC

# Panoramic Elevator

## 360° 3D full-view observation



### TO -G007

Standard

Upper/lower shades: Stepped pentagon steel plate banking finish with decoration lamp  
 Ceiling: Middle with acrylic roof lamp, side with tube lamp  
 Side wall and back wall: Stainless steel hairline board  
 Front wall: Laminated glass safety clamp  
 Handrail: Stainless steel round handrail  
 Floor: PVC floor



### TO -G008

Optional

Car cover: Hairline stainless steel, stainless steel mono-tube  
 Observation wall: Safety laminated glass  
 Decoation roof: Mirror stainless steel, light-emitting panel, down lamp  
 Car wall: Hairline stainless steel  
 Handrail: Stainless steel mono-tube  
 Floor: PVC



### TO -G009

Optional

Outer decoration: Mirror ST. ST.  
 Ceiling: Mirror ST. ST., acrylic, LED spotlight  
 Observation wall: Laminated safety glass  
 Walls: Mirror ST. ST.  
 Handrail: ST. ST. tube  
 Flooring: Marble  
 Front wall: Laminated safety glass  
 Car door: Mirror ST. ST. framed glass door



### TO -G010

Optional

Car cover: Baking painted steel, acrylic lighting decoration  
 Observation wall: Laminated glass, 6+6mm  
 Decorative ceiling: Baking painted steel frame, light-passing board  
 Car wall: hairline Stainless steel  
 Handrail: Stainless steel flat handrail  
 Floor: PVC

### TO -G011

Optional

Outer decoration: Mirror ST. ST.  
 Ceiling: Mirror ST. ST., acrylic, LED spotlight  
 Observation wall: Laminated safety glass  
 Walls: Mirror ST. ST.  
 Handrail: ST. ST. tube  
 Flooring: Marble  
 Front wall: Laminated safety glass  
 Car door: Mirror ST. ST. framed glass door



# Cabin Operation Panel

## Standard



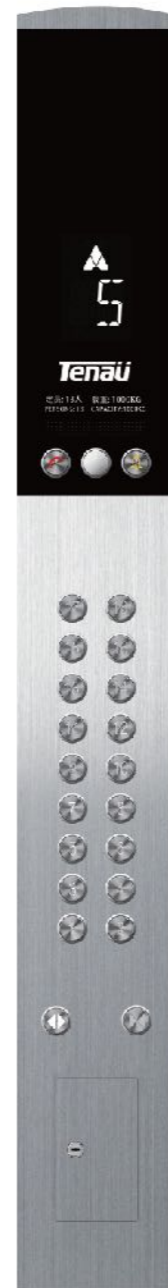
**TO-C010**  
(STEP)  
(MONARCH)



**TO-1030A**  
(STEP)



**TO-CEC300**  
(STEP)



**TO-CEC301**  
(STEP)



**TO-LSC300**  
(STEP)



**TO-LEC300**  
(STEP)



**TO-CEC260**  
(STEP)



**TO-LSC260**  
(STEP)

## Optional



**TO-C500**  
(MONARCH)



**TO-C500X**  
Wall-mounted  
control box  
(MONARCH)

Display: Dot-matrix display  
Material: Hairline stainless steel  
Parking number: 2-18 F

### Button optional

**TO-AN112**  
Square stainless steel,  
with braille

**TO-AN113**  
Circular stainless steel,  
with braille



# Cabin Operation Panel

## Multimedia display



**TO-LCD01**  
(STEP)  
(MONARCH)



**TO-LCD02**  
(STEP)  
(MONARCH)

## Optional



**TO-C600**  
(MONARCH)

Display: Dot-matrix display  
Material: Hairline stainless steel  
Parking number: 2-29 F

### Button optional

- TO-AN112**  
Square stainless steel, with braille
- TO-AN113**  
Circular stainless steel, with braille



**TO-C610X**  
Wall-mounted  
contro box  
(MONARCH)



**TO-C8002**  
(MONARCH)  
Parking number: 2-30 F



**TO-C8004**  
Inserted  
integrated model  
(MONARCH)



**Touch TO-C8012**  
(MONARCH)



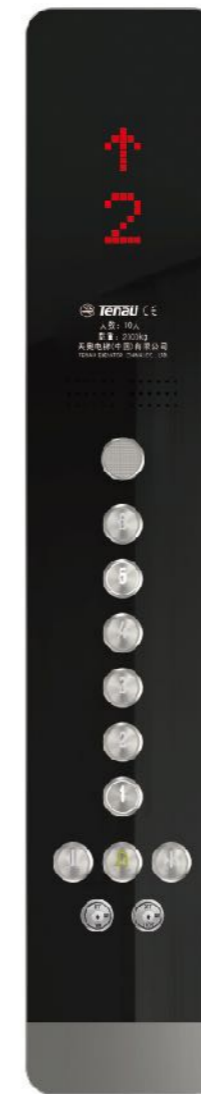
**Touch TO-C8011**  
(MONARCH)

Display: Dot-matrix display  
Material: Hairline stainless steel

## Integrated operation panel



**TO-C700**  
Integrative  
operation panel  
(STEP)  
(MONARCH)

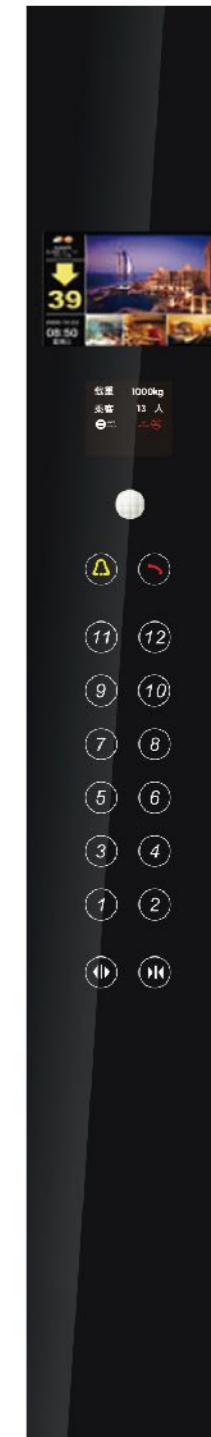


**TO-C8001**  
(MONARCH)  
(Bottomless box)

Panel: Black glass  
Display: Dot-matrix display  
Parking number: 2-30 F



**TO-C8003X**  
(MONARCH)  
(Bottomless box)



**TO-C090**  
(STEP)  
(MONARCH)  
(Bottom box)

**TO-C090**  
Panel: Black glass  
Mode of display: Multi-media  
Calling button: Touch button  
Skirtboard: LED



**TO-C090X**  
(STEP)  
(MONARCH)  
(Bottom box)



**TO-C090X-2**  
(STEP)  
(MONARCH)  
(Bottom box)



# Optional Decoration

## Hall operation panel (optional)



TO-C8002X



TO-C8002X-2



TO9001



TO-C010X



TO-C010X-2



TO-DEC300



TO-LEC300



TO-EH1030A



TO-EHD1030A

## Buttons (Optional)



TO-A101



TO-A102

## Multimedia (Optional)



Picture display  
7 inch  
8 inch  
10.4 inch



Video display  
8 inch  
10.4 inch  
12.1 inch & 15 inch

## Direction light (optional)



TOK212



TOG371



TOK451

## Ceiling



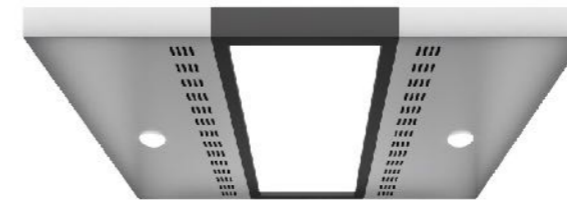
TO-D101

Painted steel plate, four side down lamp



TO-D102

Painted steel, downlight



TO-D103

Stainless steel, LED lighting



TO-D106

Mirror stainless steel, LED downlight



TO-D010

Stainless steel mirror board, energy-saving lamps



TO-D040

Stainless steel mirror board, energy-saving lamps



TO-D190

Painted steel, acrylic translucent panel



TO-D140

White transparent light board, energy-saving lamps



TO-D200

Image roof, stainless steel, tube lamp with soft illumination



TO-D230

White light-emitting panel, down lamps on both sides



# Optional Decoration

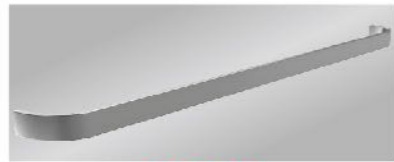
## Handrail (Optional)



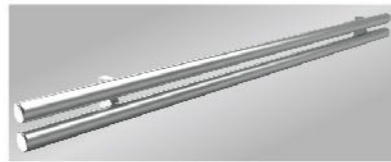
TO-F001



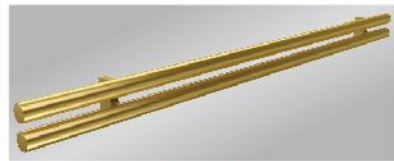
TO-F002



TO-F003



TO-F004



TO-F005



TO-F006

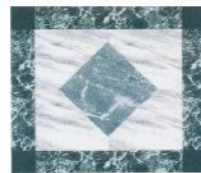
## Floor



TO-B001



TO-B002



TO-B003



TO-B004



TO-B005



TO-B006

## Landing door series



TO-M010

Landing door: Paint steel  
Jamb: Paint steel

## Color card



Light gray Dark gray Black



TO-M014

Landing door: Hairline stainless steel  
Jamb: Hairline stainless steel



TO-M011

Landing door: Mirror, etching, hairline  
Jamb: Hairline stainless steel



TO-M012

Landing door: Mirror, etching, hairline  
Jamb: Hairline stainless steel



TO-M013

Landing door: Mirror, etching  
Jamb: Hairline stainless steel



TO-M014

Landing door: Mirror, titanium steel  
Jamb: Hairline stainless steel



TO-M015

Landing door: Mirror, etching, hairline  
Jamb: Hairline stainless steel



TO-M016

Landing door: Mirror, etching, hairline  
Jamb: Hairline stainless steel



TO-M020

Landing door: Mirror, etching, vibration,  
hairline concave in golden  
Jamb: Hairline stainless steel



TO-M021

Landing door: Etching, titanium steel  
Jamb: Hairline stainless steel

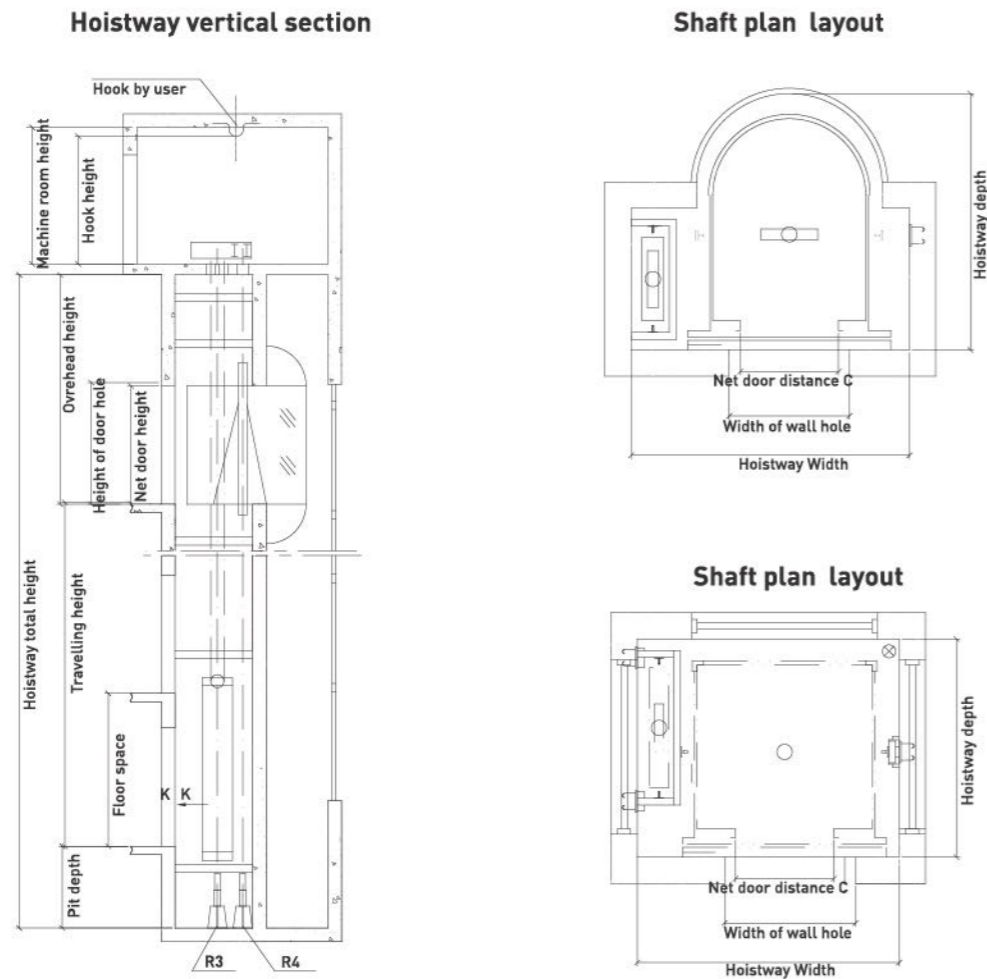


TO-M022

Landing door: Glass, hairline stainless steel  
Jamb: Hairline stainless steel



# Machine Room Panoramic Elevator Construction Parameter

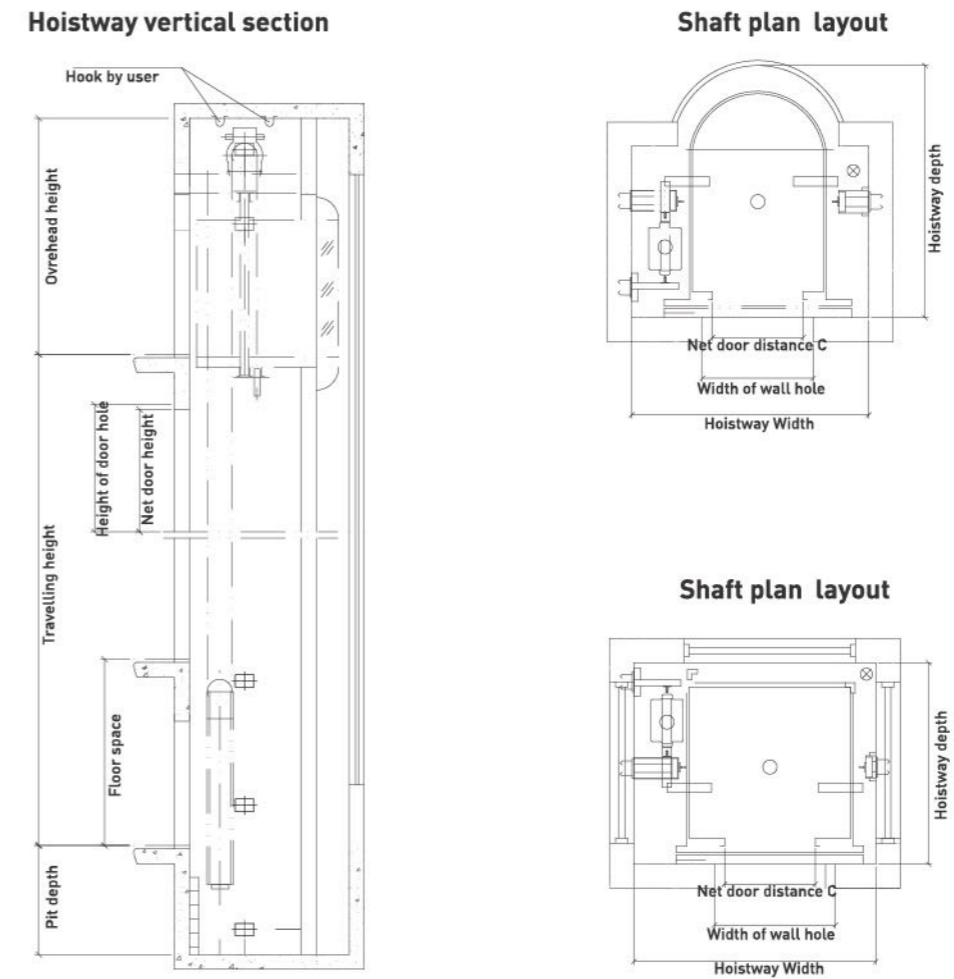


Machine room panoramic elevator parameters

Load(kg)	Speed (m/s)	Car dimension(mm)		Door-opening size(mm)	Hoistway size(mm)		Overhead height (OH)	Pit depth (PP)
		Inner size AXB		Net door-opening	Width x depth			
		Square	Round		Square	Round		
630	1.0	1400X1100	1300X1700	800	2200X1700	2150X2250	4000	1500
	1.5						4100	1600
	1.75						4200	1700
	2.0						4300	1800
800	1.0	1400X1350	1300X1700	800	2200X1800	2350X2250	4000	1500
	1.5						4100	1600
	1.75						4200	1700
	2.0						4300	1800
1000	1.0	1600X1500	1400X1850	900	2400X2000	2450X2350	4000	1500
	1.5						4100	1600
	1.75						4200	1700
	2.0						4300	1800
1250	1.0	1800X1550	1400X2150	900/1100	2600X2100	2350X2650	4200	1500
	1.5						4300	1600
	1.75						4400	1700
	2.0						4500	1800
1600	1.0	1950X1700	1500X2300	1000/1100	2750X2200	2500X2850	4200	1500
	1.5						4300	1600
	1.75						4400	1700
	2.0						4500	1800

The above civil construction parameter is for reference. Civil construction is subject to the formal civil construction diagrams.

# Machine Roomless Panoramic Elevator Construction Parameter



Machine roomless panoramic elevator parameters

Load(kg)	Speed (m/s)	Car dimension(mm)		Door-opening size(mm)	Hoistway size(mm)		Overhead height (OH)	Pit depth (PP)
		Inner size AXB		Net door-opening	Width x depth			
		Square	Round		Square	Round		
630	1.0	1400X1100	No	800	2250X1700	No	4000	1500
	1.5						4100	1600
	1.75						4200	1700
	2.0						4300	1800
800	1.0	1400X1350	1300X1700	800	2250X1800	2150X2500	4000	1500
	1.5						4100	1600
	1.75						4200	1700
	2.0						4300	1800
1000	1.0	1600X1500	1400X1850	900	2450X2000	2350X2500	4000	1500
	1.5						4100	1600
	1.75						4200	1700
	2.0						4300	1800
1250	1.0	1800X1550	1400X2150	900/1100	2650X2100	2500X2650	4200	1500
	1.5						4300	1600
	1.75						4400	1700
	2.0						4500	1800
1600	1.0	1950X1700	1500X2300	1000/1100	2850X2200	2600X2850	4200	1500
	1.5						4300	1600
	1.75						4400	1700
	2.0						4500	1800

The above civil construction parameter is for reference. Civil construction is subject to the formal civil construction diagrams.