



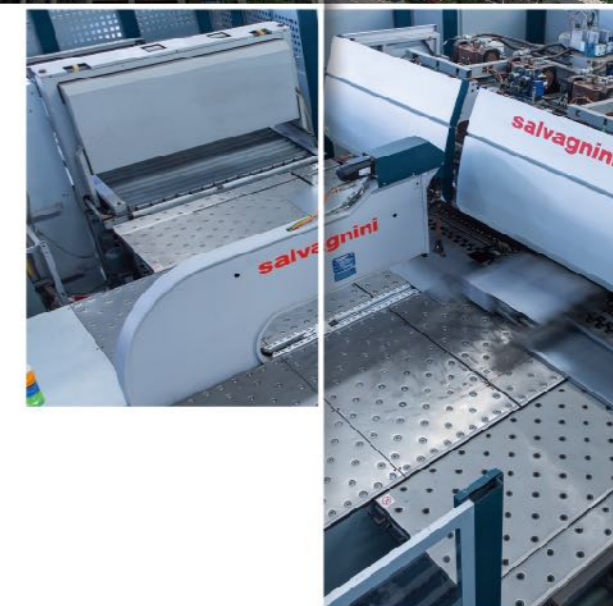
Tenau

TENAU ELEVATOR



TENAU

ELEVATOR



TENAU ELEVATOR (CHINA) CO., LTD.

North of Lianyi Road, Nanxun Economic Development Zone,
Zhejiang Province
Tel: +86-572-3765590
E-mail: Export@tenau.com.cn
[Http://www.tenau.net](http://www.tenau.net)
P.C.: 313009

Contents

Brief	01- 02	Villa cabin decoration	55- 56
Tenau intelligentized factory with internationally advanced manufacturing standard	03- 04	Villa decoration	57- 58
Certificates and Engineering Cases	05- 10	Function Table	59- 60
Passenger Elevator With Machine Room	11	Construction Parameter Villa Elevator	61- 62
Passenger Elevator Machine Roomless	12	Freight Elevator	63
Cabin Decoration(Passenger Elevator)	13- 30	Car elevator	64
Panoramic Elevator	31	Decoration Of Freight elevator & Car elevator	65- 66
Panoramic Elevator 180° half-round observation	32	Function Table	67- 68
Panoramic Elevator 270° three-side observation	33	Freight Elevator Construction Parameter	69
Panoramic Elevator 360° 3D full-view observation	34	Machine Roomless Freight Elevator Construction Parameter	70
Hospital Elevator	35- 36	Car Elevator Construction Parameter	71
Cabin operation Panel	37- 40	Escalator Summary	72
Optional decoration	41- 44	Moving Walk Summary	73
Function Table	45- 46	Heavy Duty Type Escalator	74
Machine Room Passenger Elevator Construction Parameter	47- 48	Escalator Safety Device	75
Machine Roomless Passenger Elevator Construction Parameter	49	Moving Walk Safety Device	76
Hospital Elevator Construction Parameter	50	Standard & Optional Function	77- 78
Machine Room Panoramic Elevator Construction Parameter	51	30° Escalator Construction Parameter	79
Machine Roomless Panoramic Elevator Construction Parameter	52	35° Escalator Construction Parameter	80
Spacious Space Taste Leisurely Life	53	12° Moving walk Construction Parameter	81
Green And Noiseless Design Gives You Healthy Life	54	0° Moving walk Construction Parameter	82

Brief

TENAU ELEVATOR (CHINA) Co., Ltd., located in Huzhou City, Zhejiang Province, is a wholly-owned investment company by SUZHOU DIAO Elevator Co., Ltd. in 2012, which is specially aimed at the overseas market. TENAU is close to Shanghai, only one hour away by car.

During the initial set-up stage, TENAU has already had professional elevator and escalator production lines, fully automatic panel production equipment - salvagnini, and employed more than 300 people.

In 2016, DIAO Group Ltd consolidated these two factories - DIAO and TENAU, which then have become two production bases, sharing the production platform. DIAO manufactures all the escalators and passenger elevators, and TENAU is responsible for manufacturing all the cargo elevators and home lift.

Brand DIAO has stayed in business for 16 years and accumulated rich experience in production, technology and product development. On this basis, TENAU can better serve overseas customers, at the same time, we can provide multiple languages service, including Russian, Spanish, English and Arabic.

TENAU has obtained energy efficiency certification of TUV for MR and MRL, besides this, our company has also obtained CE certification for MR, MRL of Passenger, ESCALATOR and MOVING WALK.

TENAU owns independent R&D team, which successfully developed and operated the 13m/s elevator on the testing tower with the height of 168 meters.



- 168-meter test tower
- 13 m / s ultra-high speed with independent R & D technology
- High-end intelligent elevator
- Industry 4.0 production system
- Export more than 70 countries in worldwide

Tenau Modern Intelligentized Factory With Internationally Advanced Manufacturing Standard

The Tenau (China) industry 4.0 production system, which was guided, planned and constructed by the German Tenau elevator group, creates new opportunities for establishment of modern intelligentized factory. Several top automatic production equipment, combined with big data and Internet of Things, can realize intelligent processing, intelligent production, intelligent detection and intelligent monitoring of industry procedures.

Fully-automatic panel production line-Salvagnini

World top automatic equipment, automatic set-up of processing thickness without the necessity to adjust time and MAC2.0 adaptive technique to guarantee quality.

SMT paster assembly line

SMT paster assembly line which is second to none in the industry can realize production of outer casing, interface board, power panel and communication panel with international standard.

Industrial robot

Realize mechanical way of working, adapt to extreme environment and realize multiple tasks, like carrying, welding, and loading and unloading.



Certificate and Engineering Projects

Certificates

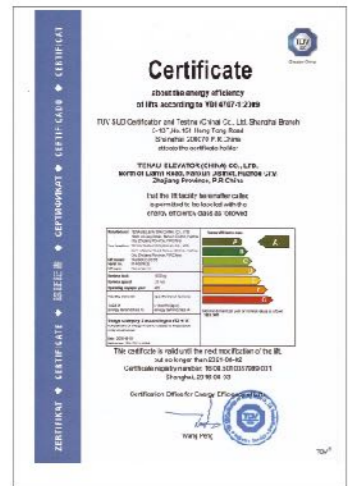


TUV-CERTIFICATE-ESCALATOR



TUV-CERTIFICATE-MOVING WALK

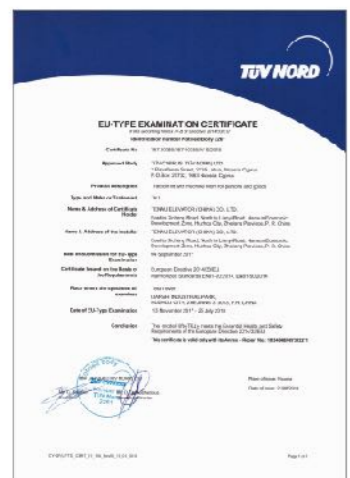
EN 115-1:2008+A1:2010



CERTIFICATE OF ENERGY EFFICIENCY



CERTIFICATE OF ENERGY EFFICIENCY



TUV-CERTIFICATE-MACHINE ROOM-PASSENGER ELEVATOR



TUV-CERTIFICATE-MACHINE ROOM-PASSENGER ELEVATOR

European Directive 2014/33/EU
Harmonized Standards EN81-20:2014, EN81-50:2014

Asia



ICON SIAM Shopping Mall, Bangkok, Thailand



TERMINAL 21 Shopping Mall, Pattaya, Thailand



Hotel Yasmin Karawaci, Indonesia



Subway project, Seoul, South Korea



Grand Kamala Lagoon, Jakarta, Indonesia



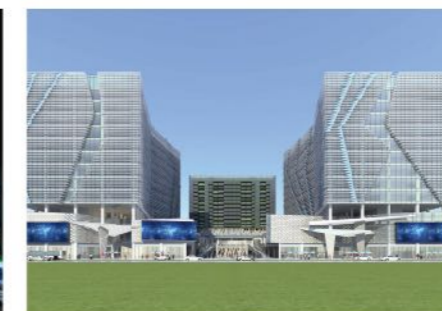
Porto de Melaka, Malacca, Malaysia



Gangshan Shopping Mall, Kaohsiung, Taiwan



Fengshan Shopping Mall, Kaohsiung, Taiwan



International Plaza, Phnom Penh, Cambodia



Zhiron Garden, Sihanoukville, Cambodia

Certificate and Engineering Projects

Latin America



UNITEC, Queretaro, Mexico



TOLUCA, Queretaro, Mexico



Colombia



Parque de Ocio, Bogota, Colombia



Colombia



Colombia



BPS, Montevideo, Uruguay



URQUIZA, Montevideo, Uruguay

Russian speaking countries



Best Center, St Petersburg, Russia



Moscow Shopping Mall



Moscow Shopping Mall



Hotel, Novosibirsk, Russia



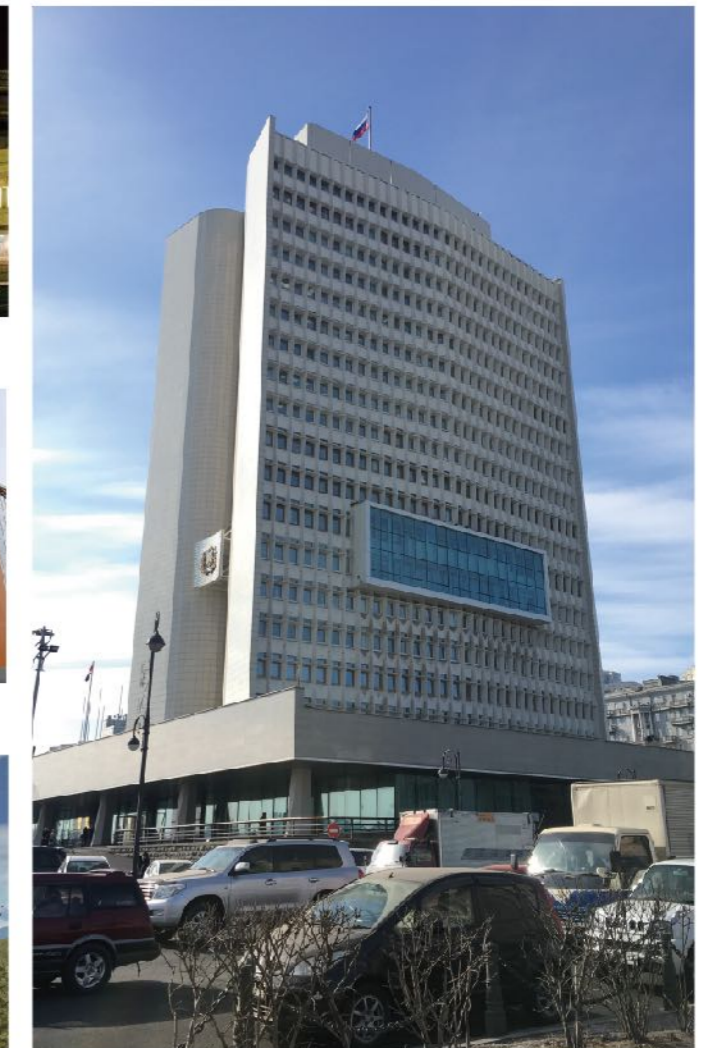
Khabarovsk Airport



Shopping Mall, Novosibirsk, Russia



Pala Group, Tbilisi, Georgia



Administration Building, Vladivostok, Russia

Certificate and Engineering Projects

The Middle East



Laleh Building, Mashhad, Iran



ARG Shopping Mall, Mashhad, Iran



Aftab Shopping Mall, Mashhad, Iran

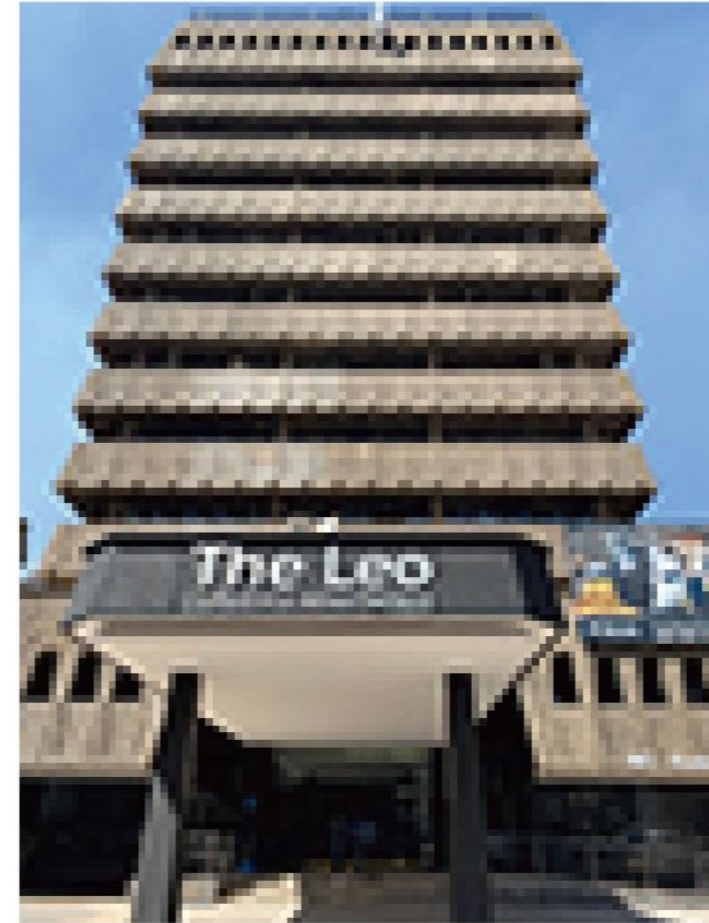


Sand Rose, Dubai



Bonyad Project, Mashhad, Iran

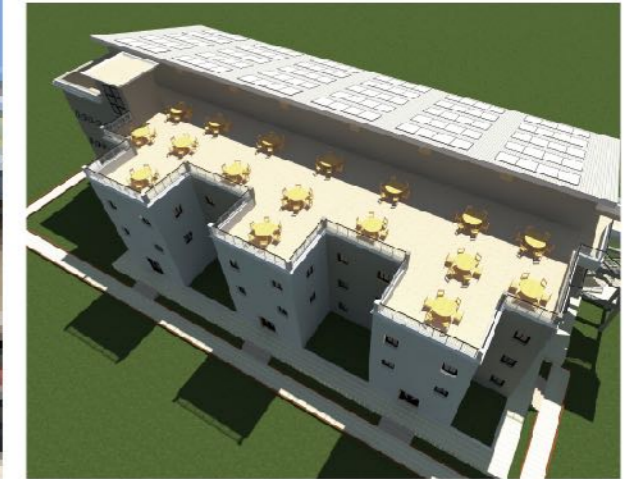
Africa



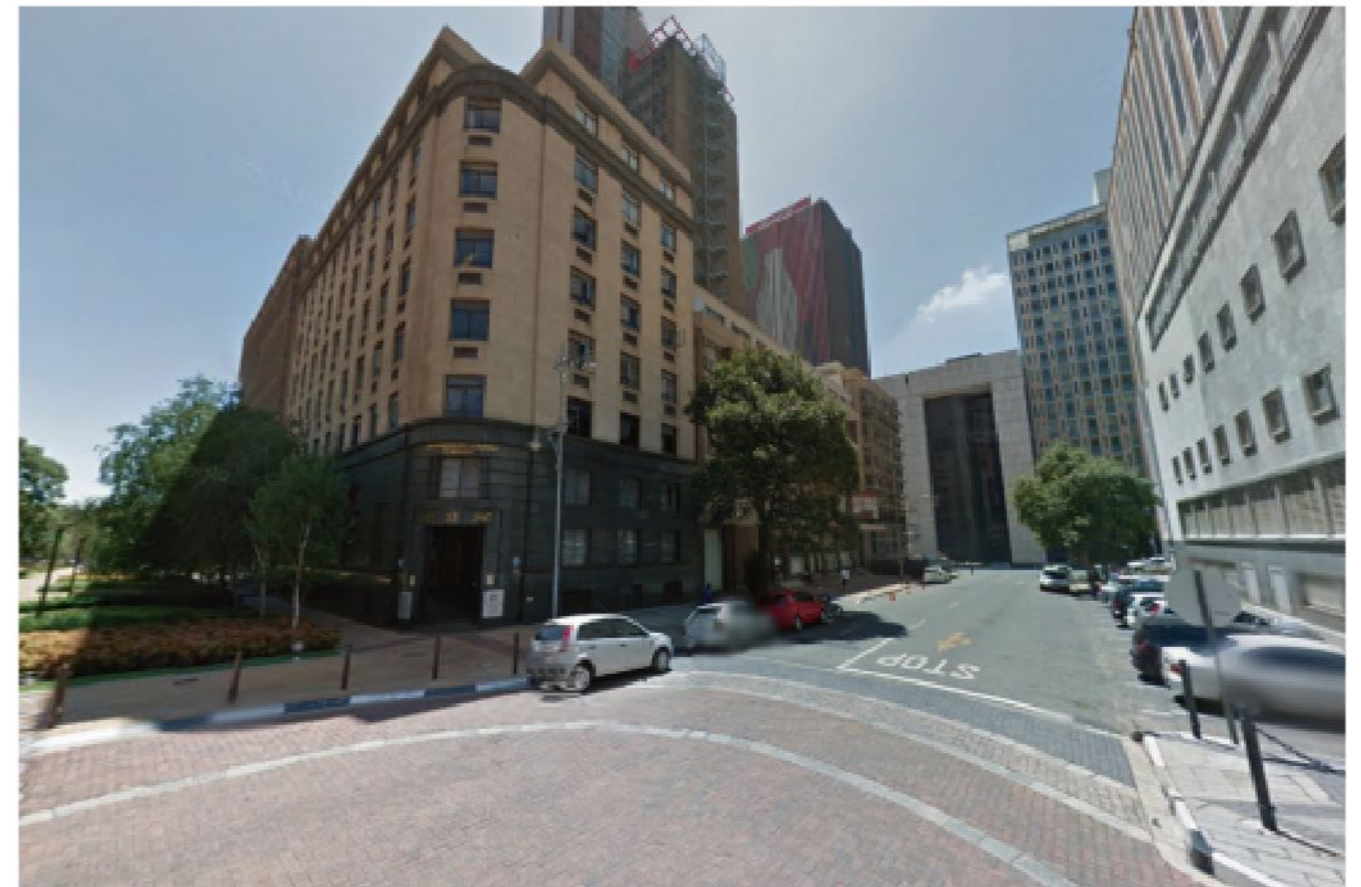
The Leo lifestyle apartments, South Africa



Palm Spring Resort, Liberia



Molecular Lab Building, Banjul, Gambia



58 Main St, Johannesburg, Gauteng

Passenger Elevator With Machine Room

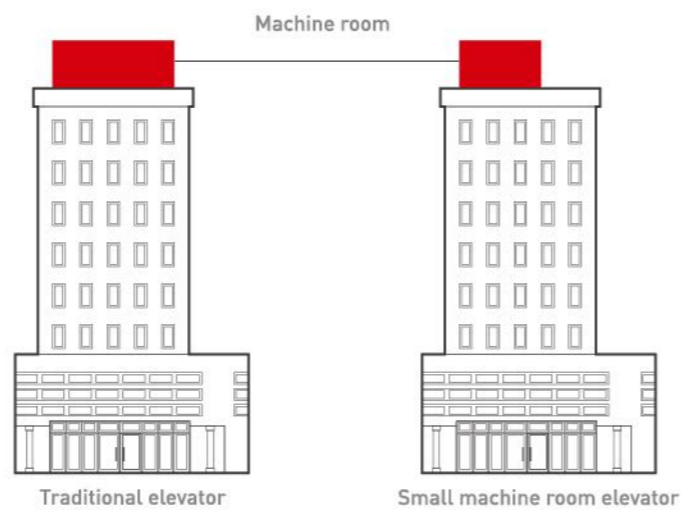
Saving room volume

50%

Space efficiency

The machine room of the elevator only need 50% space of the traditional machine room. Therefore, it provides more possibilities for construction design.

Tenau passenger elevators with small machine room have improved its performance by reducing area of their machine rooms. With advantages in saving floor areas and construction costs, the elevators are applicable to office buildings, hotels and supermarkets.

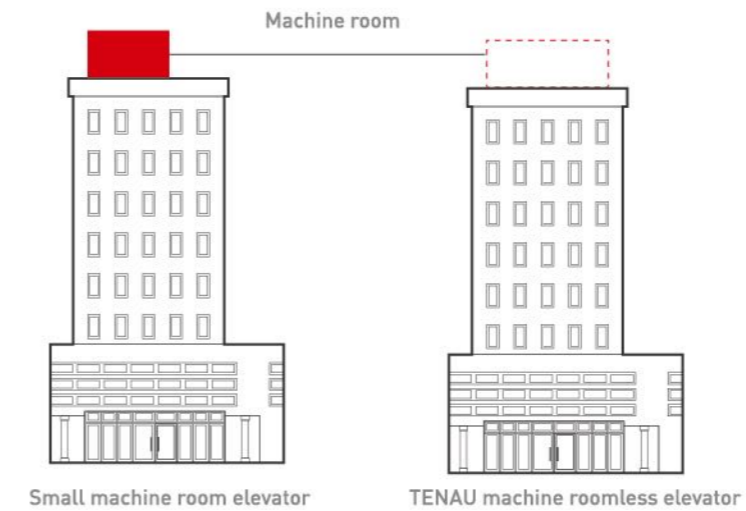


Passenger Elevator Machine Roomless

Tenau machine roomless passenger elevators eliminate influence of the machine room on construction from the structural aspect, providing more possibilities for construction space arrangement or construction design. Such elevators are applicable to hotels, business buildings high-rises and other buildings with higher requirements for construction.

Free up the space

The control cabinet and traction machine are installed in inner part of the hoist way, freeing up the original space spared for the machine room. Compared with traditional design, the new mode could save more than 10% of the floor area.



Freight Elevator



This elevator is specifically designed for the transportation of cargoes, with many wide door opening modes and spacious yet sturdy car, suitable for the transportation of large cargoes and ensuring the safety when passengers and cargoes both present in the car. Technically, advanced CPU control is applied, realizing contact free control to elevate the performance of the elevator, making it the best choice for cargo transportation in factories, warehouses and malls, etc.

Consider practicality

Considering the size of the cargoes, the designing for the door of the car adopts multiple methods to open, so as to ensure the width of the door opening is the same as that of the car, making cargoes move freely in and out.

Subtle processing

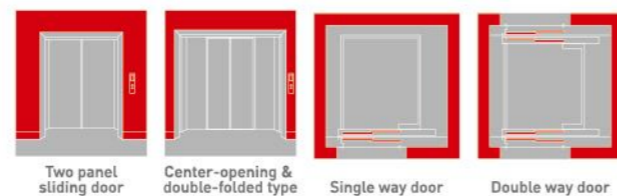
VVVF technology ensures constant torque and, with a sturdy car, the elevator can keep constant operation under all circumstances and precise floor leveling.

Proven safety

Based upon standardized safety device, the slippery resistance as well as the door machine's safety configuration is improved, which ensures the precise leveling for cargo transportation.

The multiple door opening modes

In order to satisfy different entry / exit requirements from vast users, TENAU freight elevator offers four door opening modes of side opening, central opening double-folded door, one-way door opening, opposite door opening. It can flexibly match with the factory, warehouse, department store, shopping center, housing property management center etc.



Car Elevator



In the modern city, there are more and more cars. To solve the difficulty of parking, TENAU uses its mature elevator technology to make for cars a hindrance-free transportation, vertically through a design, that considers the performance and size of various cars.

Large load capacity

Large area of the car elevator ensures a normal load capacity of over 3 tons, capable of handling various cars.

Convenient door opening design

Front and rear door opening are available, making it easy for cars to move in and out.

Rated load

> 3t

Save construction area

80%

Reliable safety device

Safety device is mounted on the car ground of the elevator, which alerts the drivers on real time basis to ensure safe operation.

Decoration of Freight Elevator & Car Elevator



TO-J21H

Standard

Ceiling: Painted steel (optional color)
 Car wall: Painted steel (optional color)
 Car door: Painted steel (optional color)
 Skirtboard: Fluorescent lamp
 Floor: Riffled plate



TO-J22H

Optional

Ceiling: Hairline stainless steel
 Car wall: Hairline stainless steel
 Car door: Hairline stainless steel
 Skirtboard: Fluorescent lamp
 Floor: Riffled plate

Ceiling



TO-D100



TO-D110



TO-D120



TO-C100



TO-C100X

Car operation panel

Panel: Hairline stainless steel
 Display board: Plastic board (dark blue)
 Mode of display: Digital LED matrix display
 Calling button: Micro-buttons/framed mirrors, sanded stainless steel for the panel
 Responding light: LED

Landing door series



TO-M070
Standard



TO-M080
Standard

Optional color cards

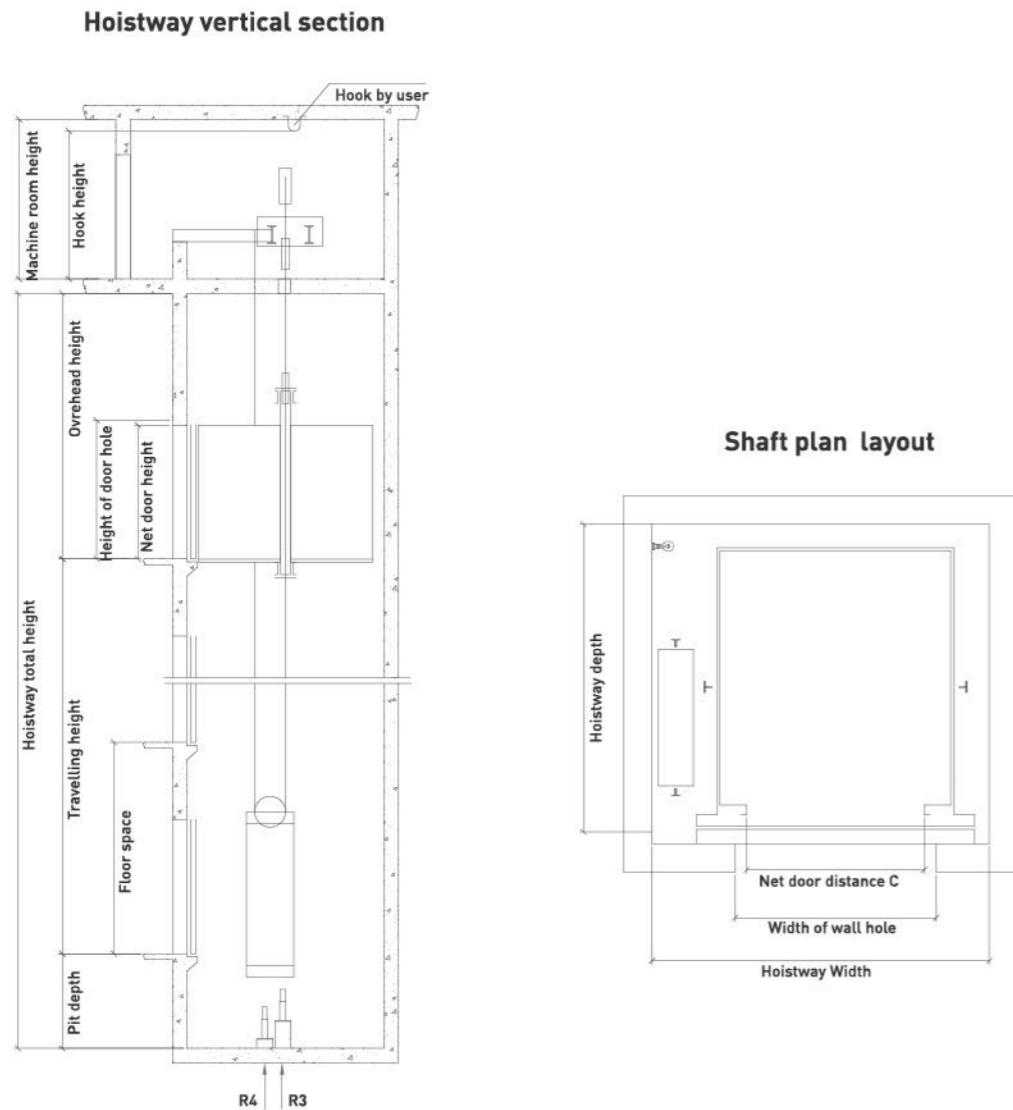
RAL7035
Light gray

RAL1015
Creamcolored

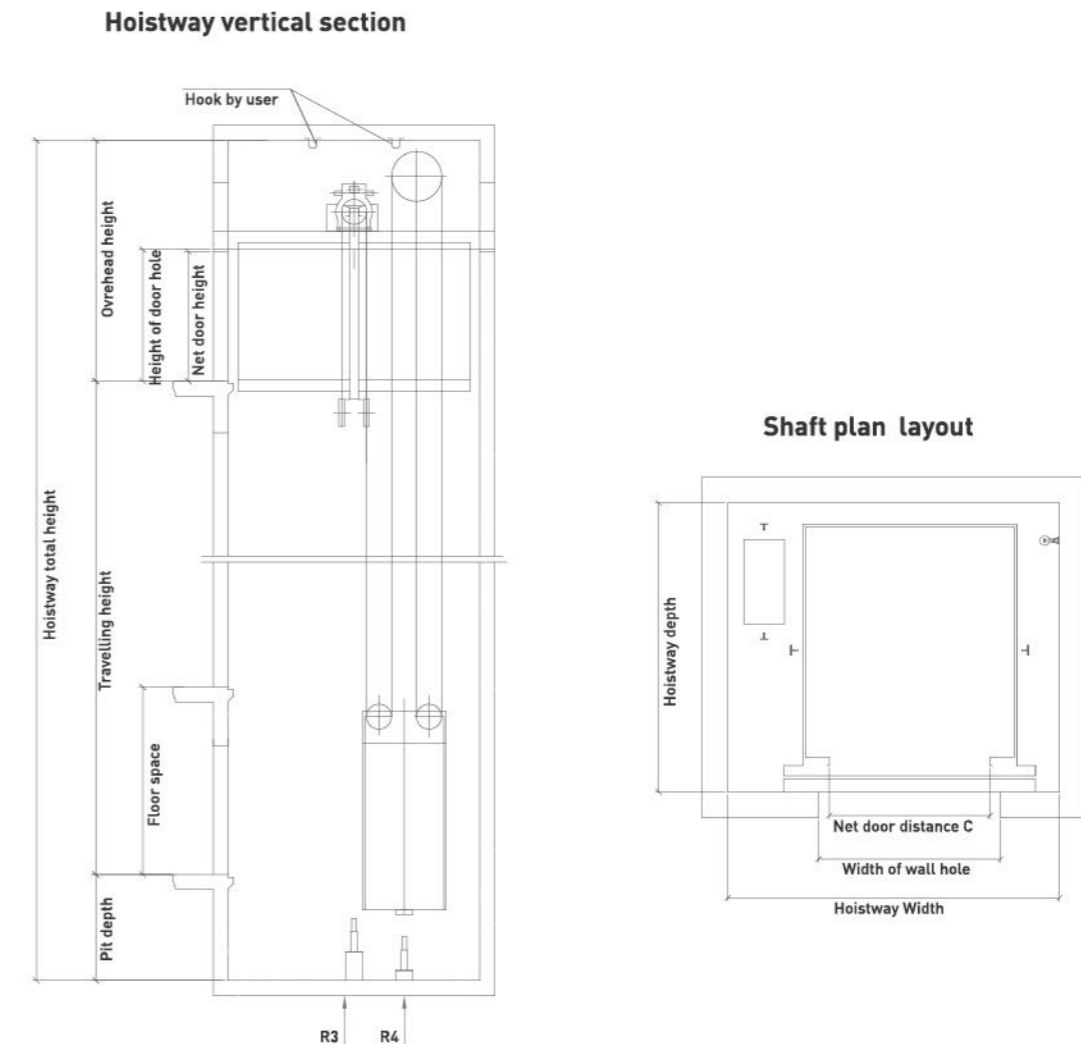
RAL6027
Light green

RAL6019
Indigo Green

Freight Elevator Construction Parameter



Machine Roomless Freight Elevator Construction Parameter



Freight elevator parameters

Load(kg)	Speed (m/s)	Car dimension(mm)	Door-opening size(mm)		Hoistway size(mm)	Machine room size	Overhead height (OH)	Pit depth (PP)
		Inner size AXB	Net door-opening	Net door height	XxY	SxT		
1000	0.5	1450x1600	1100	2200	2300x2200	3000x3000	4000	1200
2000	0.5	1950x2150	1500	2200	2850x2700	3500x4000	4200	1300
	1.0							
3000	0.5	2000x2900	2000	2200	3450x3400	4000x4000	4300	1400
	1.0							
5000	0.5	2400x3600	2400	2400	4000x4100	4200x5000	4400	1500
	1.0							
10000	0.5	3200x5000	2600	2400	4700x5500	4700x5500	4600	1700

Machine roomless freight elevator parameters

Load(kg)	Speed(m/s)	Car dimension(mm)	Door-opening size(mm)		Hoistway size(mm)	Overhead height (OH)	Pit depth (PP)
		Inner size AXB	Net door-opening	Net door height	XxY		
1600	0.5	1600x2150	1400	2200	2700x2600	4300	1500
	1.0						
2000	0.5	1950x2150	1500	2200	3200x2800	4400	1500
	1.0						
3000	0.5	2000x2900	2000	2200	3600x3400	4500	1500
	1.0						