



Tenau
TENAU ELEVATOR



TENAU
ELEVATOR



TENAU ELEVATOR (CHINA) CO., LTD.

North of Lianyi Road, Nanxun Economic Development Zone,
Zhejiang Province
Tel: +86-572-3765590
E-mail: Export@tenau.com.cn
[Http://www.tenau.net](http://www.tenau.net)
P.C.: 313009

Contents

Brief	01- 02	Villa cabin decoration	55- 56
Tenau intelligentized factory with internationally advanced manufacturing standard	03- 04	Villa decoration	57- 58
Certificates and Engineering Cases	05- 10	Function Table	59- 60
Passenger Elevator With Machine Room	11	Construction Parameter Villa Elevator	61- 62
Passenger Elevator Machine Roomless	12	Freight Elevator	63
Cabin Decoration(Passenger Elevator)	13- 30	Car elevator	64
Panoramic Elevator	31	Decoration Of Freight elevator & Car elevator	65- 66
Panoramic Elevator 180° half-round observation	32	Function Table	67- 68
Panoramic Elevator 270° three-side observation	33	Freight Elevator Construction Parameter	69
Panoramic Elevator 360° 3D full-view observation	34	Machine Roomless Freight Elevator Construction Parameter	70
Hospital Elevator	35- 36	Car Elevator Construction Parameter	71
Cabin operation Panel	37- 40	Escalator Summary	72
Optional decoration	41- 44	Moving Walk Summary	73
Function Table	45- 46	Heavy Duty Type Escalator	74
Machine Room Passenger Elevator Construction Parameter	47- 48	Escalator Safety Device	75
Machine Roomless Passenger Elevator Construction Parameter	49	Moving Walk Safety Device	76
Hospital Elevator Construction Parameter	50	Standard & Optional Function	77- 78
Machine Room Panoramic Elevator Construction Parameter	51	30° Escalator Construction Parameter	79
Machine Roomless Panoramic Elevator Construction Parameter	52	35° Escalator Construction Parameter	80
Spacious Space Taste Leisurely Life	53	12° Moving walk Construction Parameter	81
Green And Noiseless Design Gives You Healthy Life	54	0° Moving walk Construction Parameter	82

Brief

TENAU ELEVATOR (CHINA) Co., Ltd., located in Huzhou City, Zhejiang Province, is a wholly-owned investment company by SUZHOU DIAO Elevator Co., Ltd. in 2012, which is specially aimed at the overseas market. TENAU is close to Shanghai, only one hour away by car.

During the initial set-up stage, TENAU has already had professional elevator and escalator production lines, fully automatic panel production equipment - salvagnini, and employed more than 300 people.

In 2016, DIAO Group Ltd consolidated these two factories - DIAO and TENAU, which then have become two production bases, sharing the production platform. DIAO manufactures all the escalators and passenger elevators, and TENAU is responsible for manufacturing all the cargo elevators and home lift.

Brand DIAO has stayed in business for 16 years and accumulated rich experience in production, technology and product development. On this basis, TENAU can better serve overseas customers, at the same time, we can provide multiple languages service, including Russian, Spanish, English and Arabic.

TENAU has obtained energy efficiency certification of TUV for MR and MRL, besides this, our company has also obtained CE certification for MR, MRL of Passenger, ESCALATOR and MOVING WALK.

TENAU owns independent R&D team, which successfully developed and operated the 13m/s elevator on the testing tower with the height of 168 meters.



- 168-meter test tower
- 13 m / s ultra-high speed with independent R & D technology
- High-end intelligent elevator
- Industry 4.0 production system
- Export more than 70 countries in worldwide

Tenau Modern Intelligentized Factory With Internationally Advanced Manufacturing Standard

The Tenau (China) industry 4.0 production system, which was guided, planned and constructed by the German Tenau elevator group, creates new opportunities for establishment of modern intelligentized factory. Several top automatic production equipment, combined with big data and Internet of Things, can realize intelligent processing, intelligent production, intelligent detection and intelligent monitoring of industry procedures.

Fully-automatic panel production line-Salvagnini

World top automatic equipment, automatic set-up of processing thickness without the necessity to adjust time and MAC2.0 adaptive technique to guarantee quality.

SMT paster assembly line

SMT paster assembly line which is second to none in the industry can realize production of outer casing, interface board, power panel and communication panel with international standard.

Industrial robot

Realize mechanical way of working, adapt to extreme environment and realize multiple tasks, like carrying, welding, and loading and unloading.



Certificate and Engineering Projects

Certificates



TUV-CERTIFICATE-ESCALATOR



TUV-CERTIFICATE-MOVING WALK

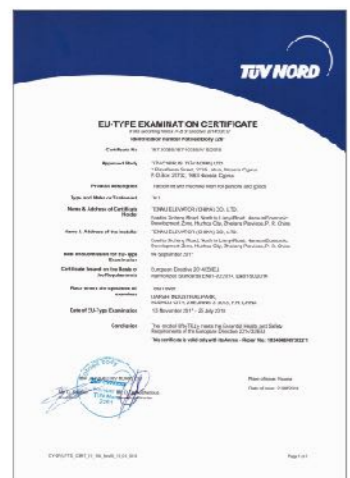
EN 115-1:2008+A1:2010



CERTIFICATE OF ENERGY EFFICIENCY



CERTIFICATE OF ENERGY EFFICIENCY



TUV-CERTIFICATE-MACHINE ROOM-PASSENGER ELEVATOR



TUV-CERTIFICATE-MACHINE ROOM-PASSENGER ELEVATOR

European Directive 2014/33/EU
Harmonized Standards EN81-20:2014, EN81-50:2014

Asia



ICON SIAM Shopping Mall, Bangkok, Thailand



TERMINAL 21 Shopping Mall, Pattaya, Thailand



Hotel Yasmin Karawaci, Indonesia



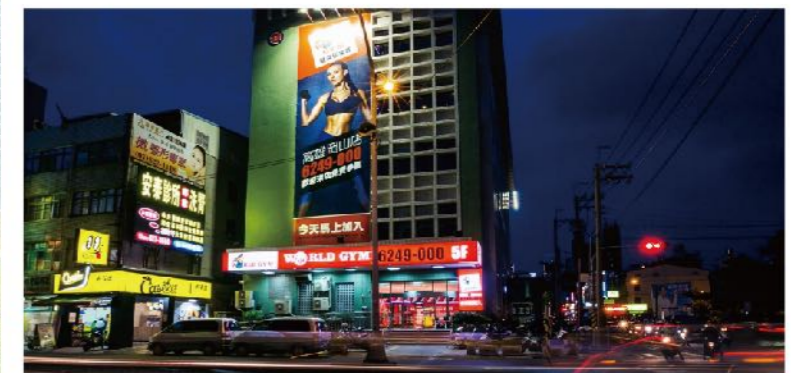
Subway project, Seoul, South Korea



Grand Kamala Lagoon, Jakarta, Indonesia



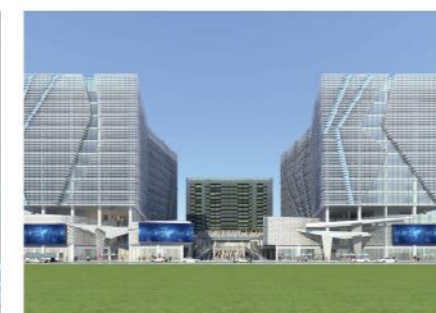
Porto de Melaka, Malacca, Malaysia



Gangshan Shopping Mall, Kaohsiung, Taiwan



Fengshan Shopping Mall, Kaohsiung, Taiwan



International Plaza, Phnom Penh, Cambodia



Zhirong Garden, Sihanoukville, Cambodia

Certificate and Engineering Projects

Latin America



UNITEC, Queretaro, Mexico



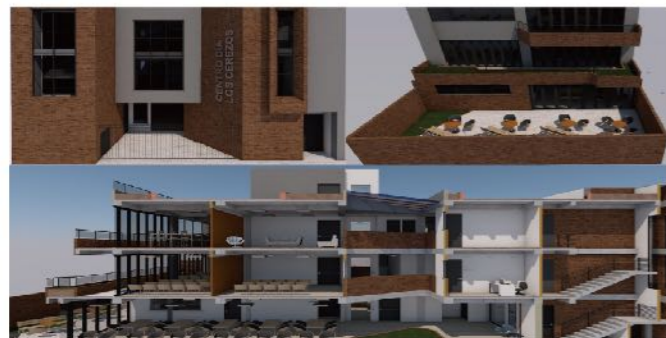
TOLUCA, Queretaro, Mexico



Colombia



Parque de Ocio, Bogota, Colombia



Colombia



Colombia



BPS, Montevideo, Uruguay



URQUIZA, Montevideo, Uruguay

Russian speaking countries



Best Center, St Petersburg, Russia



Moscow Shopping Mall



Moscow Shopping Mall



Hotel, Novosibirsk, Russia



Khabarovsk Airport



Shopping Mall, Novosibirsk, Russia



Pala Group, Tbilisi, Georgia



Administration Building, Vladivostok, Russia

Certificate and Engineering Projects

The Middle East



Laleh Building, Mashhad, Iran



ARG Shopping Mall, Mashhad, Iran



Aftab Shopping Mall, Mashhad, Iran

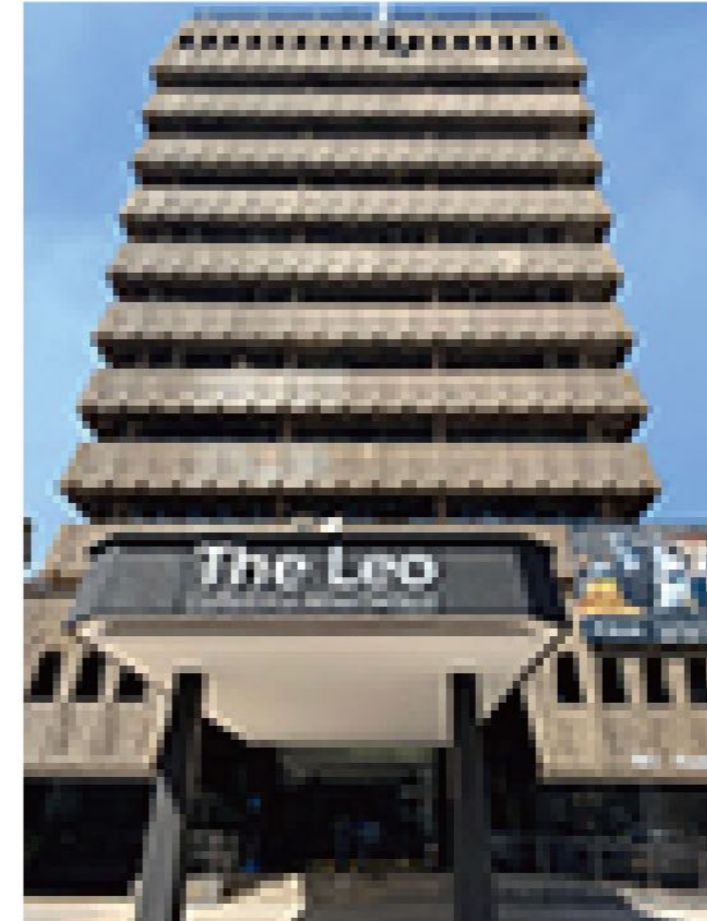


Sand Rose, Dubai



Bonyad Project, Mashhad, Iran

Africa



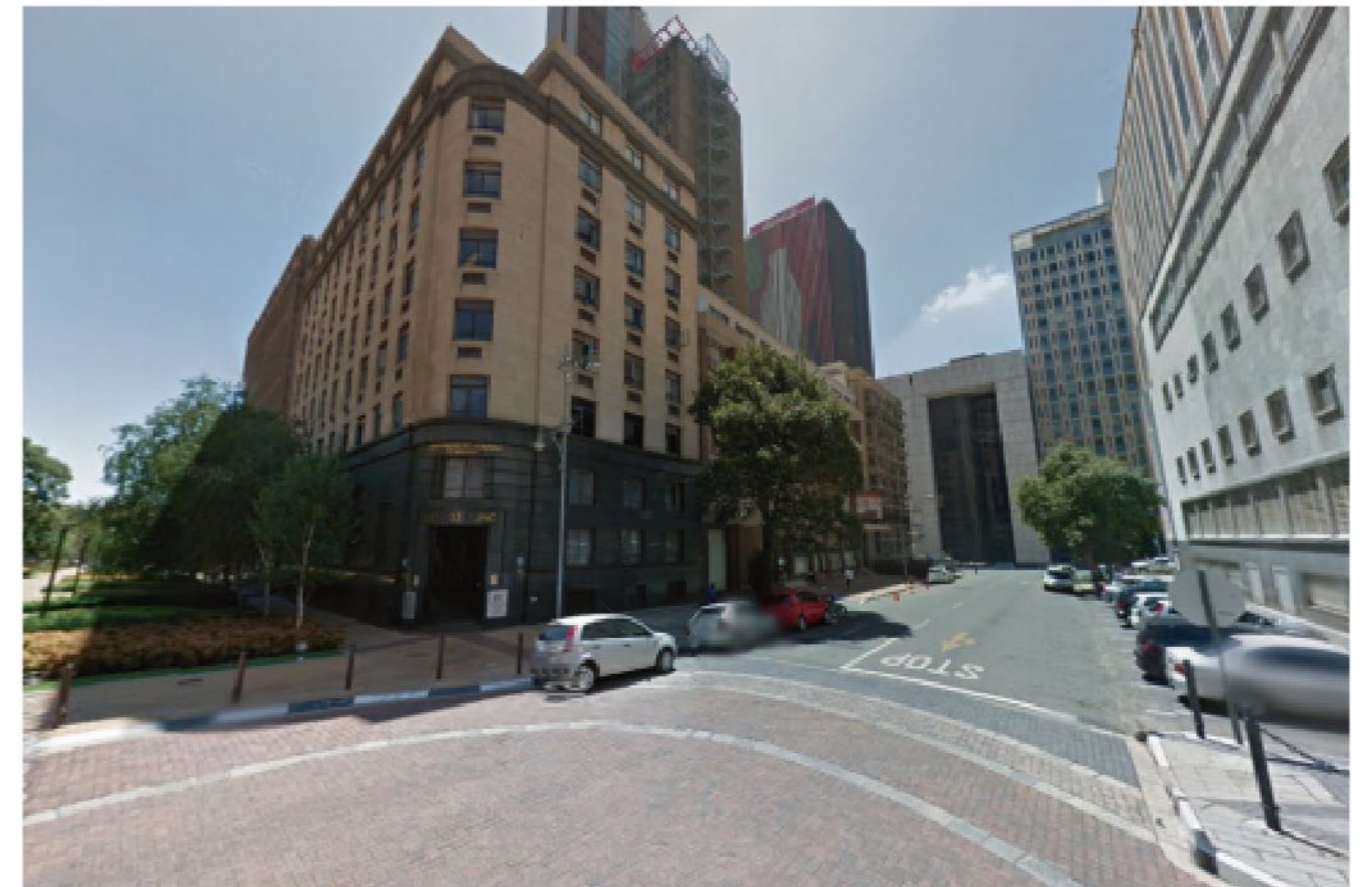
The Leo lifestyle apartments, South Africa



Palm Spring Resort, Liberia



Molecular Lab Building, Banjul, Gambia



58 Main St, Johannesburg, Gauteng

Passenger Elevator With Machine Room

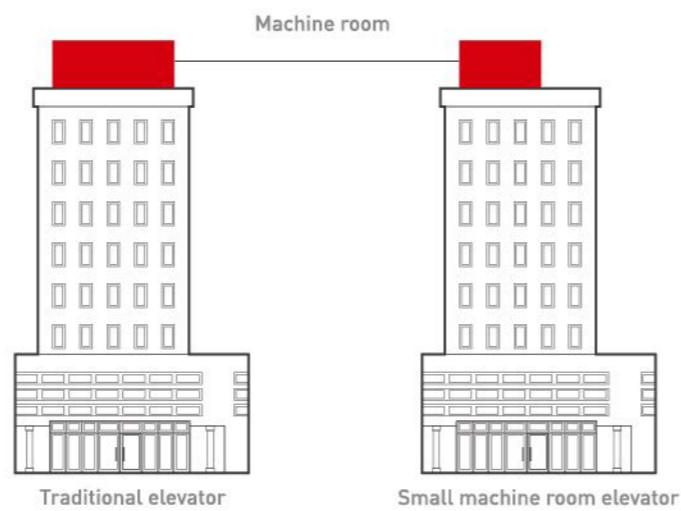
Saving room volume

50%

Space efficiency

The machine room of the elevator only need 50% space of the traditional machine room. Therefore, it provides more possibilities for construction design.

Tenau passenger elevators with small machine room have improved its performance by reducing area of their machine rooms. With advantages in saving floor areas and construction costs, the elevators are applicable to office buildings, hotels and supermarkets.

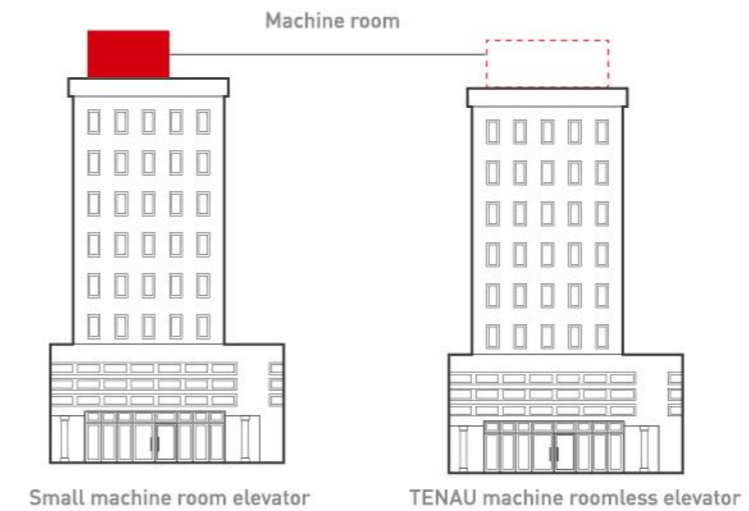


Passenger Elevator Machine Roomless

Tenau machine roomless passenger elevators eliminate influence of the machine room on construction from the structural aspect, providing more possibilities for construction space arrangement or construction design. Such elevators are applicable to hotels, business buildings high-rises and other buildings with higher requirements for construction.

Free up the space

The control cabinet and traction machine are installed in inner part of the hoist way, freeing up the original space spared for the machine room. Compared with traditional design, the new mode could save more than 10% of the floor area.



Hospital Elevator

Tenau high-quality medical elevator is developed on basis of deep researches on demands of medical institutions. Our company uses advanced technologies and humanized design to meet demands of doctors and patients for delivering stretchers and medical devices. The elevator is characterized by reliability, stability, accuracy, comfortable experience and energy efficiency. It can meet demands of modernized hospitals, medical centers and sanatoriums.



Automatic ultraviolet disinfection (optional)

In case of staying in idle status, the elevator will automatically start up ultraviolet disinfection device to eliminate viruses and keep the lift car clean.

Deferred closing button (optional)

The elevator is equipped with deferred closing button to delay the closing, so as to guarantee personal safety of medical staff and patients while they enter or leave the lift car.

Safety and reliability

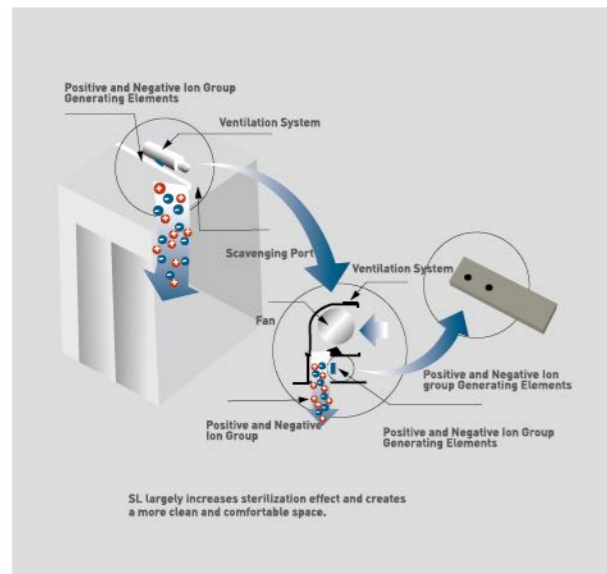
Complete security technology system ensures safe operation of the elevator and provides medical staff and patients with more care.

Optimized lift car structure

The lift car enables heavy load with a satisfactory depth. It could hold stretchers or even sickbeds.

EMC (electromagnetic compatibility)

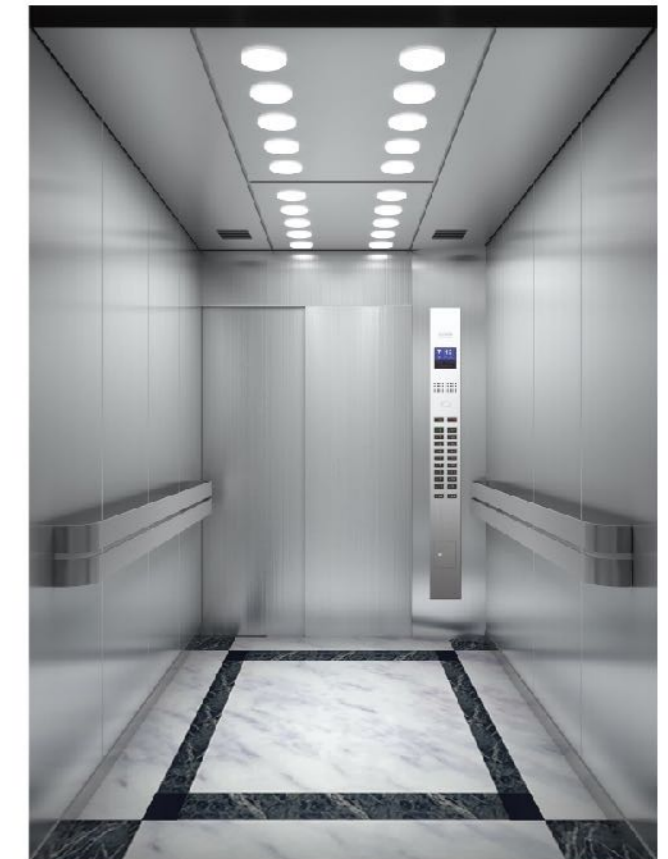
The elevator can resist electromagnetic interference of medical devices to meet demands of medical systems.



TO-Y001

Standard

Ceiling: Painted steel, fluorescent lighting, tube lamp (integration)
Car wall: Hairline stainless steel
Handrail: Double flat stainless steel
Floor: PVC



TO-Y002

Standard

Ceiling: Hairline stainless steel
Car wall: Hairline stainless steel
Handrail: Double flat stainless steel
Floor: PVC

Cabin Operation Panel

Standard



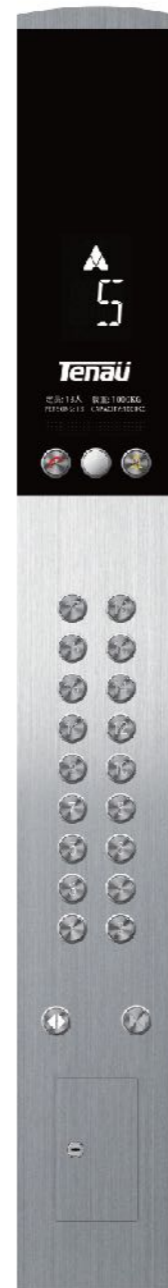
TO-C010
(STEP)
(MONARCH)



TO-1030A
(STEP)



TO-CEC300
(STEP)



TO-CEC301
(STEP)



TO-LSC300
(STEP)



TO-LEC300
(STEP)



TO-CEC260
(STEP)



TO-LSC260
(STEP)

Optional



TO-C500
(MONARCH)



TO-C500X
Wall-mounted
control box
(MONARCH)

Display: Dot-matrix display
Material: Hairline stainless steel
Parking number: 2-18 F

Button optional

TO-AN112
Square stainless steel,
with braille

TO-AN113
Circular stainless steel,
with braille

Cabin Operation Panel

Multimedia display



TO-LCD01
(STEP)
(MONARCH)



TO-LCD02
(STEP)
(MONARCH)

Display: Dot-matrix display
Material: Hairline stainless steel

Optional



TO-C600
(MONARCH)

Display: Dot-matrix display
Material: Hairline stainless steel
Parking number: 2-29 F

Button optional

- TO-AN112**
Square stainless steel, with braille
- TO-AN113**
Circular stainless steel, with braille



TO-C610X
Wall-mounted
control box
(MONARCH)



TO-C8002
(MONARCH)
Parking number: 2-30 F



TO-C8004
Inserted
integrated model
(MONARCH)



Touch TO-C8012
(MONARCH)



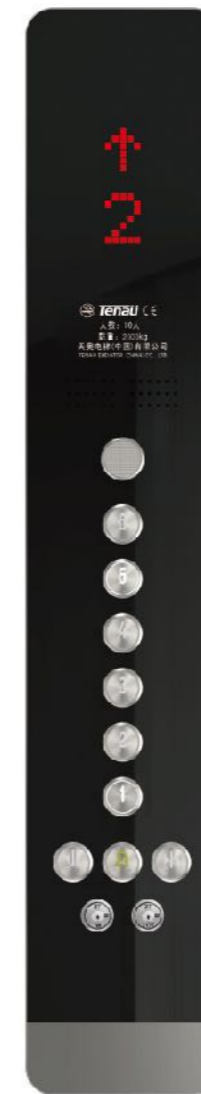
Touch TO-C8011
(MONARCH)

Integrated operation panel



TO-C700
Integrative
operation panel
(STEP)
(MONARCH)

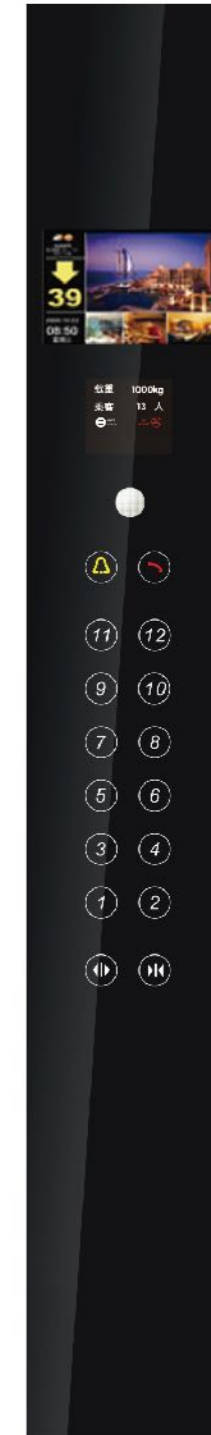
Panel: Black glass
Display: Dot-matrix display
Parking number: 2-30 F



TO-C8001
(MONARCH)
(Bottomless box)



TO-C8003X
(MONARCH)
(Bottomless box)



TO-C090
(STEP)
(MONARCH)
(Bottom box)

TO-C090
Panel: Black glass
Mode of display: Multi-media
Calling button: Touch button
Skirtboard: LED



TO-C090X
(STEP)
(MONARCH)
(Bottom box)



TO-C090X-2
(STEP)
(MONARCH)
(Bottom box)

Optional Decoration

Hall operation panel (optional)



TO-C8002X



TO-C8002X-2



TO9001



TO-C010X



TO-C010X-2



TO-DEC300



TO-LEC300



TO-EH1030A



TO-EHD1030A

Buttons (Optional)



TO-A101



TO-A102

Direction light (optional)



TOK212



TOG371



TOK451

Multimedia (Optional)



Picture display
7 inch
8 inch
10.4 inch



Video display
8 inch
10.4 inch
12.1 inch & 15 inch

Ceiling



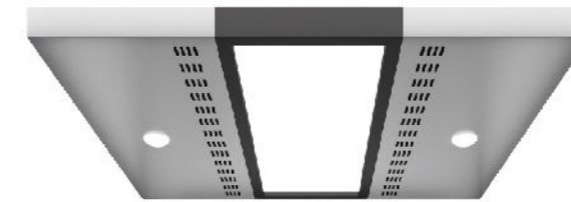
TO-D101

Painted steel plate, four side down lamp



TO-D102

Painted steel, downlight



TO-D103

Stainless steel, LED lighting



TO-D106

Mirror stainless steel, LED downlight



TO-D010

Stainless steel mirror board, energy-saving lamps



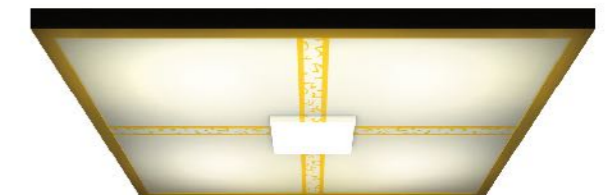
TO-D040

Stainless steel mirror board, energy-saving lamps



TO-D190

Painted steel, acrylic translucent panel



TO-D140

White transparent light board, energy-saving lamps



TO-D200

Image roof, stainless steel, tube lamp with soft illumination



TO-D230

White light-emitting panel, down lamps on both sides

Optional Decoration

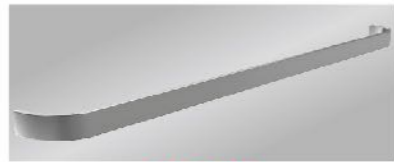
Handrail (Optional)



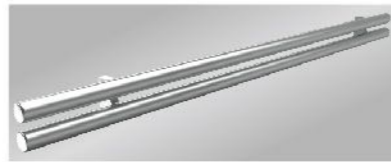
TO-F001



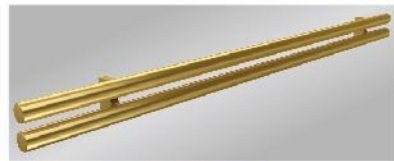
TO-F002



TO-F003



TO-F004



TO-F005



TO-F006

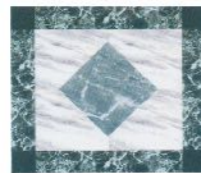
Floor



TO-B001



TO-B002



TO-B003



TO-B004



TO-B005



TO-B006

Landing door series



TO-M010

Landing door: Paint steel
Jamb: Paint steel

Color card



Light gray Dark gray Black



TO-M014

Landing door: Hairline stainless steel
Jamb: Hairline stainless steel



TO-M011

Landing door: Mirror, etching, hairline
Jamb: Hairline stainless steel



TO-M012

Landing door: Mirror, etching, hairline
Jamb: Hairline stainless steel



TO-M013

Landing door: Mirror, etching
Jamb: Hairline stainless steel



TO-M014

Landing door: Mirror, titanium steel
Jamb: Hairline stainless steel



TO-M015

Landing door: Mirror, etching, hairline
Jamb: Hairline stainless steel



TO-M016

Landing door: Mirror, etching, hairline
Jamb: Hairline stainless steel



TO-M020

Landing door: Mirror, etching, vibration,
hairline concave in golden
Jamb: Hairline stainless steel



TO-M021

Landing door: Etching, titanium steel
Jamb: Hairline stainless steel

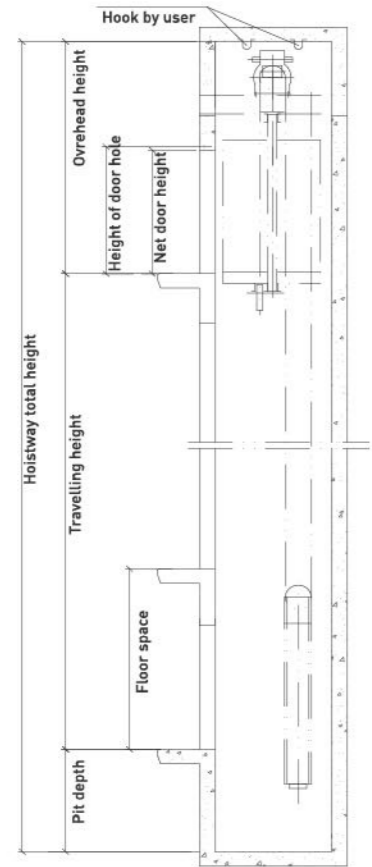


TO-M022

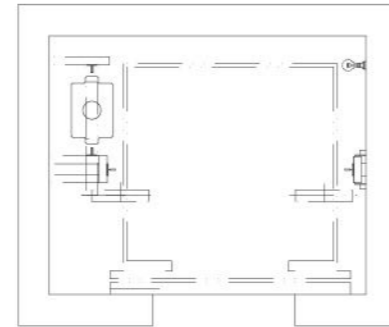
Landing door: Glass, hairline stainless steel
Jamb: Hairline stainless steel

Machine Roomless Passenger Elevator Construction Parameter

Hoistway vertical section



Shaft plan layout



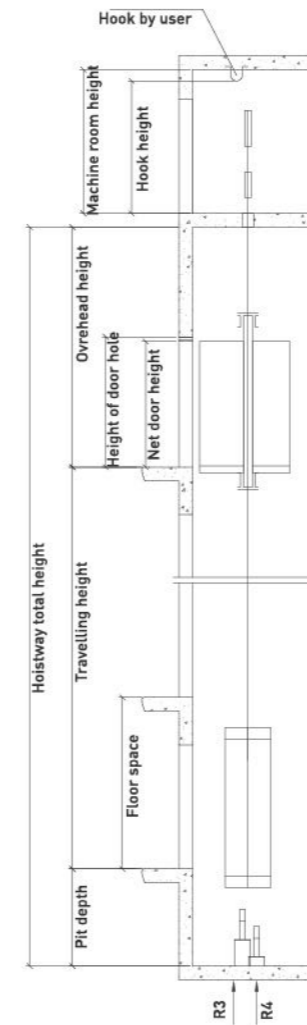
Machine roomless passenger elevator parameters

Load[kg]	Speed (m/s)	Car dimension(mm)	Door-opening size(mm)	Hoistway size(mm)	Overhead height (OH)	Pit depth (PP)
		Inner size AXB	Net door-opening	Width x depth		
630	1.0	1400X1100	800	2250X1750	3800	1300
	1.5				3900	1400
	1.75				4000	1500
	2.0				4300	1600
800	1.0	1400X1350	800	2250X1800	3800	1300
	1.5				3900	1400
	1.75				4000	1500
	2.0				4300	1600
1000	1.0	1600X1500	900	2450X1900	3800	1300
	1.5				3900	1400
	1.75				4000	1500
	2.0				4300	1600
1250	1.0	1800X1550	1100	2700X2000	4000	1300
	1.5				4100	1400
	1.75				4200	1500
	2.0				4300	1600
1350	1.0	1900X1600	1100	2800X2100	4000	1300
	1.5				4100	1400
	1.75				4200	1500
	2.0				4300	1600
1600	1.0	1950X1700	1100	2850X2200	4000	1300
	1.5				4100	1400
	1.75				4200	1500
	2.0				4500	1600
1600 Hospital elevator	1.0	1400X2400	1100	2550X2900	4200	1300
	1.5				4300	1400
	1.75				4400	1500
	2.0				4500	1600

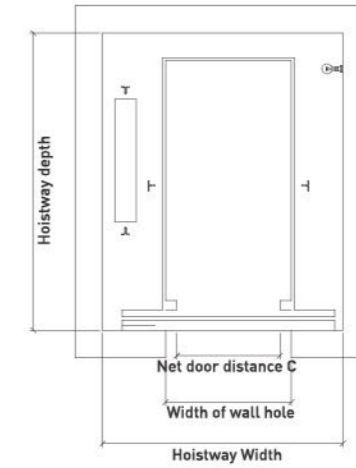
The above civil construction parameter is for reference. Civil construction is subject to the formal civil construction diagrams.

Hospital Elevator Construction Parameter

Hoistway vertical section



Shaft plan layout



Hospital elevator parameters

Load[kg]	Speed (m/s)	Car dimension(mm)	Door-opening size(mm)	Hoistway size(mm)	Overhead height (OH)	Pit depth (PP)
		Inner size AXB	Net door-opening	Width x depth		
1600	1.0	1400X2400	1100	2500X2900	4000	1300
	1.5				4100	1400
	1.75				4200	1500
	2.0				4300	1600
2000	1.0	1500X2700	1300	2550X2950	5000	2000
	1.5				4000	1300
	1.75			4100	1400	
	2.0			4200	1500	
2000	2.0	1500X2700	1300	2600X3200	4300	1600
	2.5				5000	2000

The above civil construction parameter is for reference. Civil construction is subject to the formal civil construction diagrams.